

STEPS Hip Spica Chair

INSTRUCTIONS FOR USE

Code 5580




CONTENTS	PAGE
1.0 INTRODUCTION	1
2.0 ILLUSTRATION OF YOUR CHAIR	2
3.0 FOR YOUR SAFETY	3
4.0 UNPACKING AND ASSEMBLING YOUR CHAIR	4
5.0 SETTING UP AND ADJUSTING YOUR CHAIR	4
6.0 CARE & MAINTENANCE	6
7.0 GUARANTEE & SERVICE	7
8.0 CONTINUOUS IMPROVEMENT	7
9.0 WARRANTY & AFTERSALE	8

1.0 INTRODUCTION

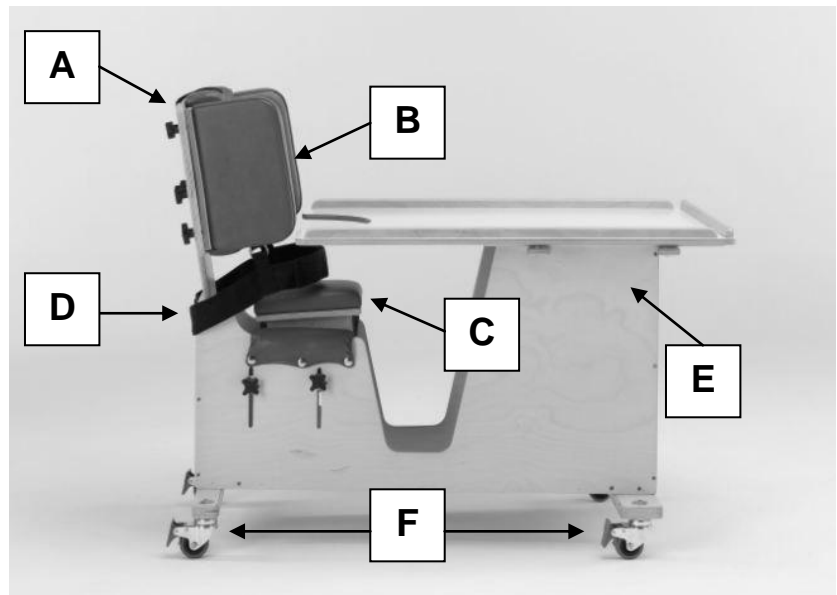
Thank you for choosing the Smirthwaite STEPS Hip Spica Chair.

The range of Hip Spica chairs have been specifically designed for children from the age of 8 months who have congenital abnormalities of the lower limbs and require supportive seating.


	<p>IMPORTANT!</p> <p>These instructions should be read by all therapists and carers using the equipment and should be retained for future reference. The product should always be used under adult supervision.</p> <p>Any incorrect use of the product and failure to follow the instructions may put the user at risk or impede the function. If you have any queries using this product or wish for further copies, please do not hesitate to contact Customer Service department on T: +44 (0) 1626 835552.</p>
---	--

2.0 ILLUSTRATION OF YOUR CHAIR

- A. Back
- B. Lateral support wings
- C. Seat
- D. Lapstrap
- E. Tray support
- F. Castors



3.0 FOR YOUR SAFETY

	STOP!
	Please read these instructions CAREFULLY and THOROUGHLY.



- The user should **NOT** be left unattended whilst in the chair. Always ensure a responsible therapist or carer is in attendance.
- The carer should be familiar with the methods of adjustment and have completed all adjustments appropriately to meet the needs of the child before transferring the child onto the chair.
- Regular maintenance checks and cleaning are essential for the safe use of this equipment (see care and maintenance section).
- Always fasten the pelvic strap and any other straps provided with the chair.
- Always lock at least two of the wheels when the chair is static.
- Regularly check that straps and/or harnesses are not showing signs of tearing or fraying, and that they fasten correctly.
- If any part is loose, damaged or functioning incorrectly, **DO NOT** use until rectified.
- Always keep this product away from naked flames, cigarettes and sources of heat including open fireplaces, radiators and heaters.
- **DO NOT** fit parts or accessories of other manufacturers to this product unless authorised to do so in writing by G&S Smirthwaite Ltd. Failure to follow these instructions will not only invalidate the guarantee but could make the chair dangerous to use. G&S Smirthwaite Ltd will not accept liability for any injury or damage incurred through such malpractices. Any repairs required must be carried out by G&S Smirthwaite Ltd authorised personnel.
- If you believe the chair or any fitted accessory to be faulty at any time, **DO NOT USE** – contact Smirthwaite by telephone on +44 (0) 1626 835552.

4.0 UNPACKING AND ASSEMBLING YOUR CHAIR

- When delivered, the chair will be supplied assembled with the exception of the tray. To fit the tray to the chair, offer up the tray to the correct position and lock into place by rotating the toggles underneath the tray.
- If any part is loose, damaged or functioning incorrectly – do not use until rectified.

If you believe this product to be faulty - **DO NOT USE** - Contact G&S Smirthwaite Ltd on T: +44 (0) 1626 835552.

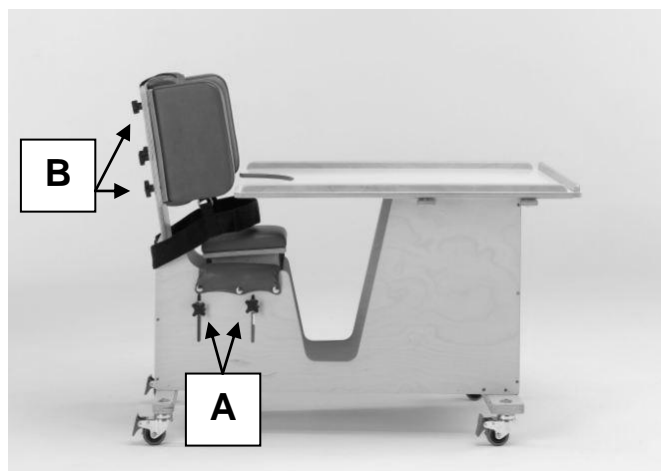
5.0 SETTING UP AND ADJUSTING YOUR CHAIR

	<p>STOP!</p> <p>If in any doubt, ALWAYS seek ADVICE.</p> <p>Always turn handwheels and screws clockwise to tighten or anti-clockwise to loosen. The chair must be fully adjusted by a therapist or trained representative before use.</p>
	<p>IMPORTANT!</p> <p>It is recommended that the chair should be used for a few days prior to any operation so that the patient can become familiar with it.</p> <p>It should then be checked in hospital after the operation, and set up again if necessary.</p> <p>The chair can normally be used from an early postoperative stage.</p>

5.1 ADJUSTMENTS

5.1.1 SEAT HEIGHT

- The seat height can be adjusted by loosening the four handwheels (A) located on the sides of the seat (two each side).
- Adjustment range is limited by the slot length on each side of the chair.
- Ensure each handwheel is tight after adjustment and before placing the child in the chair.



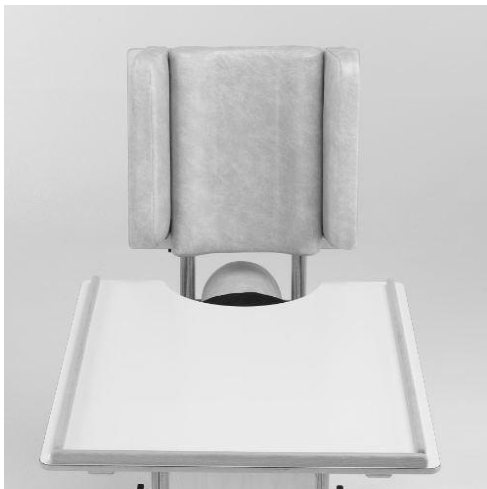
5.1.2 SEAT BACK

To adjust the height of the seat back:

- Loosen the four handwheels on the rear of the seat back (B).
- Slide seat back to desired position.
- The adjustment range is limited by the slot length on each side of the chair.
- Tighten handwheels (B) when the seat back height is set.

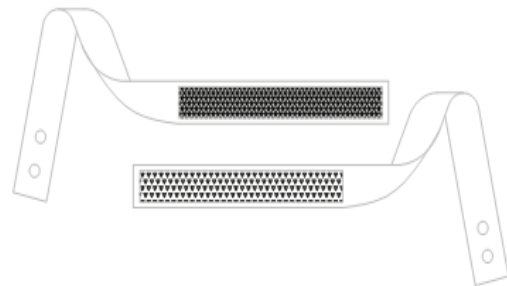
5.1.3 LATERAL SUPPORTS

- Loosen the two handwheels on each lateral support and slide outward/inward to set the desired position (as shown below).
- Ensure the handwheels are tightened after adjustment and before use.



5.1.4 PELVIC STRAP


- The strap is secured by pressing the two Velcro sections together and is released by pulling the sections apart.
- When Velcro straps are used, the Velcro should overlap by at least 75mm (3 inches).



5.1.5 HEAD REST

- A headrest accessory is available.
- The headrest fits between the upholstered back cushion and the seat back plate, being secured using the four handwheels.


6.0 CARE AND MAINTENANCE

	IMPORTANT!
	Cleaning is recommended on a regular basis

- Clean upholstery and wooden parts with a damp cloth and mild detergent.
- Stubborn marks on the woodwork should be cleaned by using a soft brush.
- Do not soak or immerse the chair in water.
- The pelvic strap can be cleaned with a damp cloth. In cases of extreme soiling it can be machined washed at low temperature with mild detergent but must be drip dried.
- Store the chair in a cool dry place and out of direct sunlight.
- DO NOT use bleach, solvents, abrasives, synthetic detergents, wax polishes, antibacterial sprays or wipes.
- For further information please refer to MHRA or your NHS cleaning guidelines.

6.1 DAILY CHECKS

- Check the tray to ensure no parts are loose or damaged.
- Check all upholstery for signs of wear and tear.
- Check that the hand wheels tighten correctly, and are not cross-threaded or damaged.
- Check all straps for fraying, and that buckles are not missing/damaged.

	STOP!
	The user should not be seated while the checks are carried out.

6.2 SERVICE INTERVAL

The STEPS Hip Spica Chair should be serviced every 3 years. Servicing must only be undertaken by a Smirthwaite service engineer, or by a Smirthwaite trained representative.

7.0 GUARANTEE & SERVICE

The chair is issued with a full parts and labour guarantee for 2 years from the date of delivery. This guarantee does not apply to accidental damage caused through inappropriate use of the chair. This guarantee is issued at the discretion of G&S Smirthwaite Ltd on RTB (Return to Base) basis.

If you have any questions or doubts relating to the safety or use of the chair please contact us for advice or assistance on:

T: +44 (0) 1626 835552

E: info@smirthwaite.co.uk

8.0 CONTINUOUS IMPROVEMENT

G&S Smirthwaite Ltd are committed to continuous improvement to their product range. Should you have any suggestions or comments please send them to our product design department at: info@smirthwaite.co.uk

G&S Smirthwaite Ltd reserve the right to change the specification or material without prior notice.

For catalogues, help and further information on our products please contact us at:

G&S Smirthwaite Ltd
17 Wentworth Road
Heathfield
Devon TQ12 6TL

T: +44 (0) 1626 835552

F: +44 (0) 1626 835428

E: info@smirthwaite.co.uk

W: www.smirthwaite.co.uk



G&S Smirthwaite, 17 Wentworth Road, Heathfield, Newton Abbot, Devon.TQ12 6TL
T: +44 (0) 1626 835552 F: +44 (0) 1626 835428 E: info@smirthwaite.co.uk
W: www.smirthwaite.co.uk