

RAMP & SCOOTER

INSTRUCTIONS FOR USE

Codes 43711



CONTENTS

PAGE

1.0 INTRODUCTION	3
2.0 ILLUSTRATION OF YOUR RAMP & SCOOTER	4
2.1 PRODUCT CODES REFERENCE TABLE	4
2.2 TECHNICAL DATA	4
3.0 FOR YOUR SAFETY	5
4.0 ASSEMBLING AND ADJUSTING YOUR RAMP & SCOOTER	6
4.1 REAR RAMP ATTACHMENT	6
4.2 FRONT RAMP ATTACHMENT	7
4.3 FOLDING THE CENTRE BOX SECTION FOR STORAGE	8
5.0 CARE & MAINTENANCE	9
6.0 WARRANTY & SERVICE	12
7.0 CONTINUOUS IMPROVEMENT	12
8.0 SERVICE INSPECTION	13



1.0 INTRODUCTION

Thank you for choosing the **Ramp & Scooter** from Smirthwaite.

The Ramp & Scooter set makes sensory therapy fun and engaging. It can be used in therapy sessions to combine enjoyment with an increase the sensory arousal levels, proprioception activity and refining motor co-ordination skills.

The Ramp & Scooter set includes two detachable ramps, a curved ramp and a straight ramp.

Included with the set is a flat padded scooter which features a removable handle.

The central supporting structure incorporates handles, rear steps and tactile elements to add extra interest to the product. With the ramps removed, the central structure can also be folded to aid storage.



IMPORTANT!

These instructions should be read by all therapists and carers using the equipment and should be retained for future reference. The product should always be used under adult supervision.

This product is NOT a toy.

Any incorrect use of the product and failure to follow the instructions may put the user at risk or impede the function. If you have any queries using this product or wish for further copies, please do not hesitate to contact Customer Service department.

Contact: Smirthwaite Ltd

T: +44 (0)1626 835552

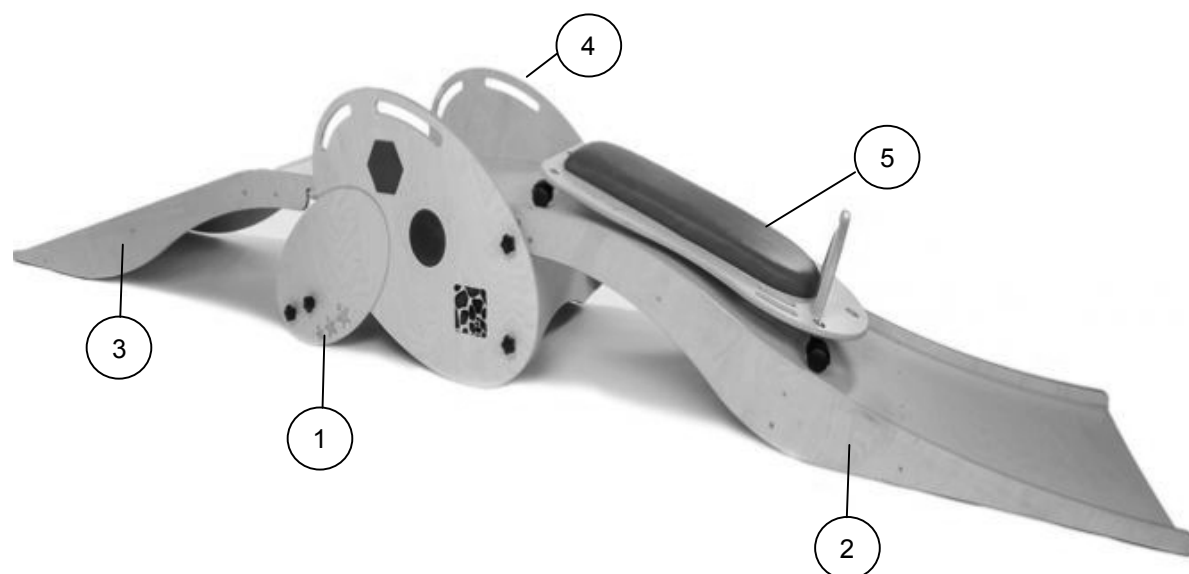
F: +44 (0)1626 835428

E: info@smirthwaite.co.uk



2.0 ILLUSTRATION OF YOUR RAMP AND SCOOTER SET

Ramp & Scooter



1. Central structure with tactile elements
2. Front curved ramp
3. Rear straight ramp
4. Handles
5. Scooter



2.1 PRODUCT CODES REFERENCE TABLE

PRODUCT	CODE
RAMP & SCOOTER	43711

2.2 TECHNICAL DATA

RAMP & SCOOTER SET	
Dimension	All measured in mm
Height	600
Width	615
Length (Overall)	3700
Length (With front ramp only)	2300
Weight limit (Kg)	80



3.0 FOR YOUR SAFETY



STOP!

Please read these instructions CAREFULLY and THOROUGHLY.

- The user should **NOT** be left unattended whilst in the product. Always ensure a responsible therapist or carer is in attendance
- Regular maintenance checks and cleaning are essential for the safe use of this equipment (see care and maintenance section)
- Ensure that all nuts, bolts and hand wheels are securely tightened and that none are missing
- The product is **ONLY** to be used indoors on a flat level surface
- **ALWAYS** ensure there is adequate run-off area immediately in front of each ramp – we recommend the fitting of padding to wall surfaces and the use of crash mats to ensure client safety
- We recommend clients wear protective helmets – we can supply a range of scrum or integral helmets, please contact our offices for further details.
- Always keep this product away from naked flames, cigarettes and sources of heat including open fireplaces, radiators and heaters
- **DO NOT** fit parts or accessories of other manufacturers to this product unless authorized to do so in writing by Smirthwaite Ltd. Failure to follow these instructions will not only invalidate the guarantee but could make the product dangerous to use. Smirthwaite Ltd will not accept liability for any injury or damage incurred through such malpractices
- Any repairs required must be carried out by Smirthwaite Ltd authorized personnel



STOP!

If you believe this product to be faulty – DO NOT USE

Contact: Smirthwaite Ltd

T: +44 (0)1626 835552

F: +44 (0)1626 835428

E: info@smirthwaite.co.uk



4.0 ASSEMBLY AND ADJUSTMENT OF YOUR RAMP AND SCOOTER SET



STOP!

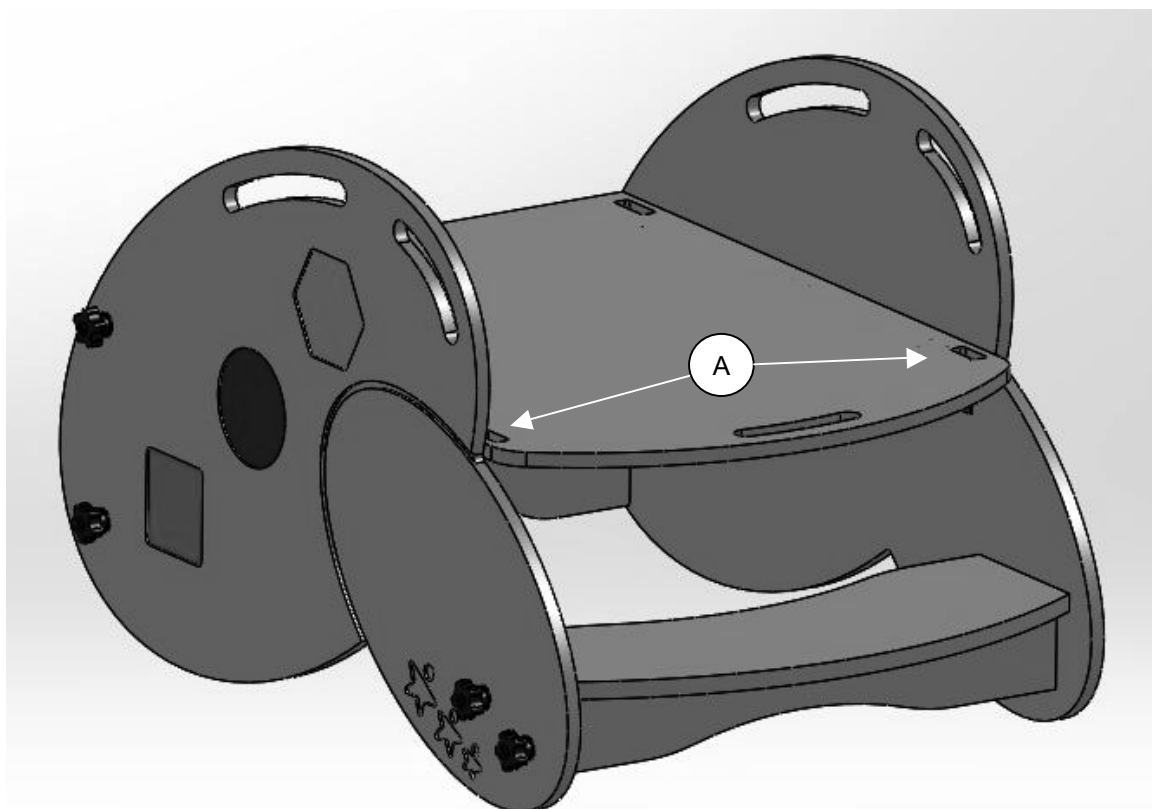
If in any doubt, **ALWAYS** seek **ADVICE**.

Always turn hand wheels, levers and screws clockwise to tighten or anti-clockwise to loosen.

- The Ramp & Scooter individual elements are supplied assembled but require final attachment to complete.

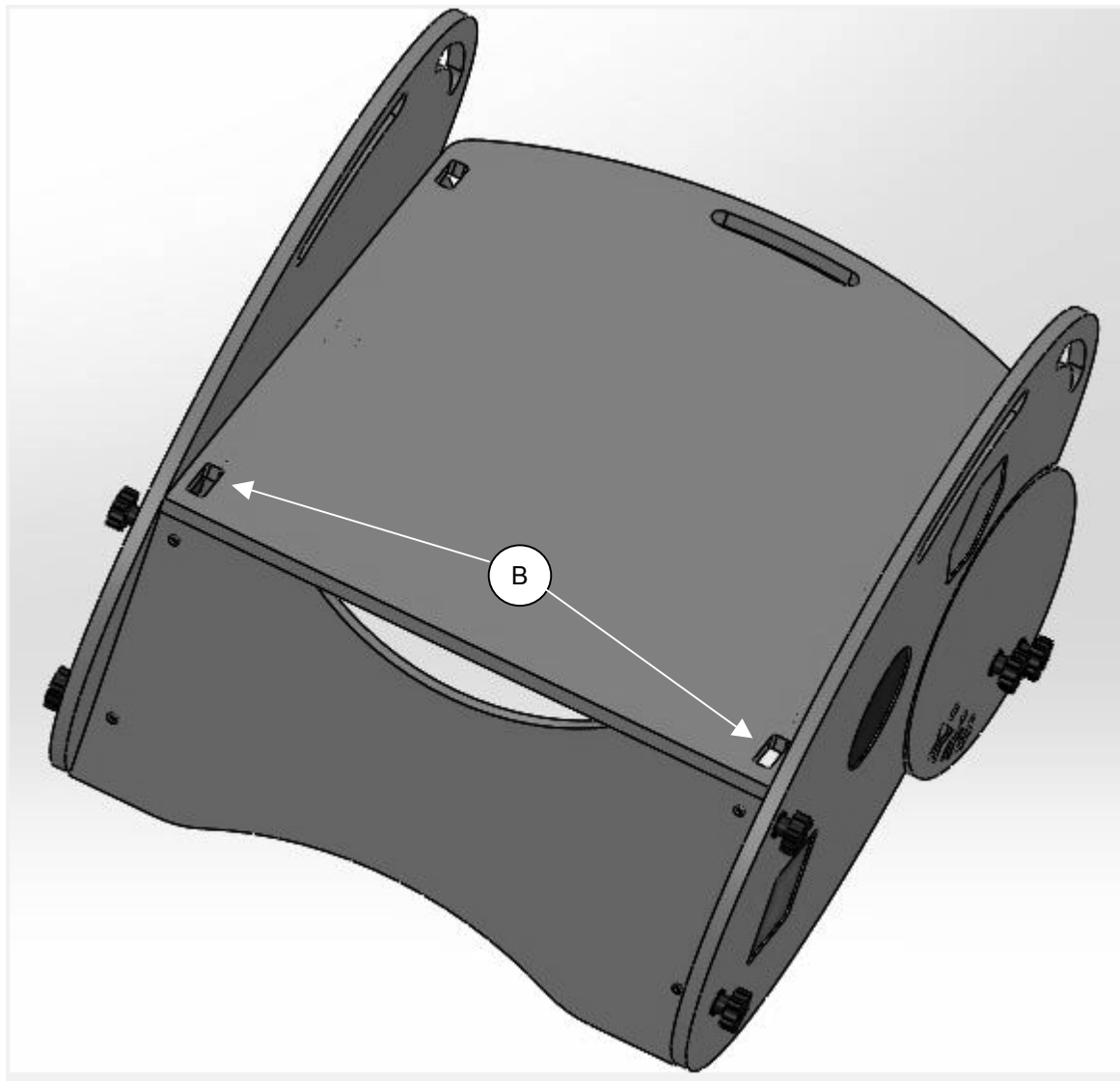
4.1 REAR RAMP ATTACHMENT

- The rear (flat) ramp connects to the central box into sockets/holes 'A' (Below)



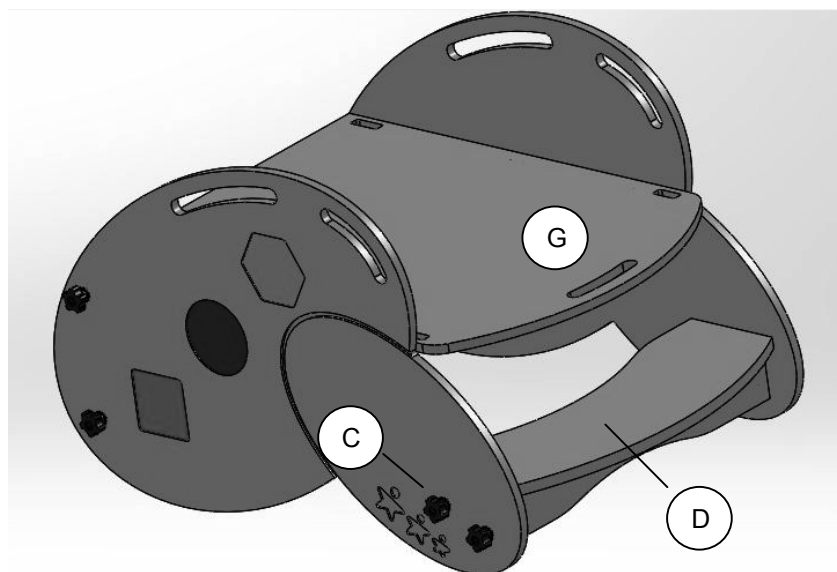
4.2 FRONT RAMP ATTACHMENT

- The front (curved) ramp connects to the central box into sockets/holes 'B' (Below)

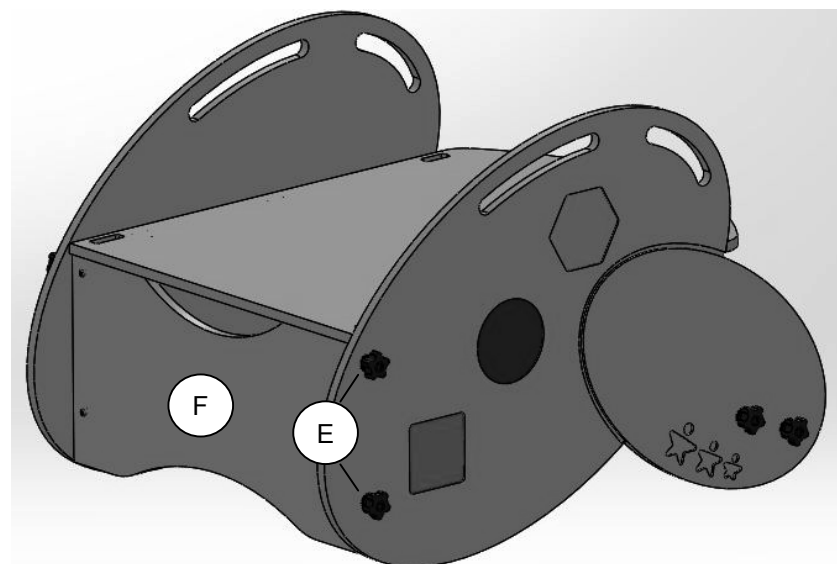


4.3 FOLDING THE CENTRE BOX FOR STORAGE

- Firstly undo the four hand-wheels located at the rear (C) of the centre box to remove the rear step (D). There are two hand-wheels per side.



- Next, undo the four hand-wheels located at the front of the centre box (E) to remove the front plate (F). There are two hand-wheels per side.
- The sides of the centre box will now fold underneath. A handle feature (G) is provided to aid lifting.



5.0 CARE AND MAINTENANCE



IMPORTANT!

CLEANING IS RECOMMENDED ON A REGULAR BASIS

- Clean wooden parts with a damp cloth and mild detergent
- Stubborn marks on the woodwork should be cleaned using a soft brush
- Do not soak or immerse the product in water
- Store the product in a cool dry place and out of direct sunlight
- DO NOT use bleach, solvents, abrasives, synthetic detergents, wax polishes, antibacterial sprays or wipes
- For further information please refer to your regional healthcare cleaning guidelines

5.1 DAILY CHECKS

- Check for signs of wear, tear or damage
- Check for missing parts
- Check that all screws and hand wheels are present and tightened correctly, and are not cross-threaded or damaged

5.2 ANNUAL SERVICE

This product should be serviced every 3 years. Servicing must only be undertaken by a Smirthwaite service engineer, or by a Smirthwaite trained representative.

5.3 NOMINAL SERVICE LIFE

Your product has a nominal service life of 12 years, during which full post-sales support will be available with regard to spares and servicing.

Product service life has been determined based upon the design complexity of product, and the anticipated exposure to normal use.

Good practice dictates all Smirthwaite products have been designed and manufactured to high levels of safety and quality, and will meet requirements of normal use when maintained in line with our servicing recommendations.





STOP!

If the product has been out of use for an extended period of time (6 months or more) it should always be serviced prior to being re-issued.

If the product has been subjected to 'heavy' or 'constant' use, the service should be reduced to half the recommended period.

Constant and/or heavy use is considered to be:

- Daily use above 7 hours duration
- Weekly use above 5 days duration
- Monthly use above 10 months per year
- Use by a client who is at 90% to 100% of the maximum weight limit of the product. The maximum weight limit must **NEVER** be exceeded
- Use by a client who is extremely active, either voluntarily or involuntarily

5.4 EXTENDING NOMINAL SERVICE LIFE

At Smirthwaite we are proud to produce products that have a reputation for quality and durability.

We believe our products have the potential to provide benefits to our clients beyond the nominal service life documented above.

We will continue to provide full support beyond the nominal service life provided the following conditions are met:

1. A full service schedule has been maintained.
2. A full service and inspection is undertaken at the end of the nominal service life period.
3. The product is subsequently serviced annually (or biannually if under 'heavy/constant' use conditions).
4. Smirthwaite reserves the right to limit support where parts/components are no longer available.



5.5 DOCUMENTATION/RECORDS

- It is the responsibility of the current equipment owner to ensure the 'Instructions for Use' manual and any further manuals for accessories fitted to the equipment are handed over to the new owner at the time of exchange/sale
- It is the responsibility of the current equipment owner to ensure the service and inspection record form is kept up to date

5.6 PRODUCT CONFIGURATION

- Smirthwaite will document and maintain a record of the original product configuration at the time of first sale
- Smirthwaite will not be held responsible for any subsequent changes to this configuration unless authorized to do so in writing by Smirthwaite
- It is the equipment owner's responsibility to maintain their own records of changes to the equipment configuration and to be able to provide such records to subsequent owners to maintain traceability
- We recommend an inspection/service by a Smirthwaite service engineer (or Smirthwaite trained engineer) whenever a significant change is made to product configuration to ensure the product is safe to use. **If in any doubt, ALWAYS seek ADVICE**



IMPORTANT REMINDER!

DO NOT fit parts or accessories of other manufacturers to this product unless authorized to do so in writing by Smirthwaite

Any servicing or repairs required must be carried out by Smirthwaite (or a Smirthwaite trained engineer).

If you believe this product to be faulty – DO NOT USE

Contact: Smirthwaite Ltd

T: +44 (0)1626 835552

F: +44 (0)1626 835428

E: info@smirthwaite.co.uk

If in any doubt, ALWAYS seek ADVICE.



6.0 WARRANTY & SERVICE

Smirthwaite Ltd warrants the products detailed on your order to be free from defects in materials and workmanship for a period of 2 years from date of delivery. If a fault develops during the period, please call Customer Services by email or telephone 01626 835552 who will advise you on the best course of action. Possible action may be for us to arrange to send out one of our Service Engineers, or have the goods returned to us. Should a repair not be possible within the guarantee period we will replace the product for new or nearest equivalent product. In the unlikely event that we cannot repair or exchange we will refund in full.

This warranty is for the UK only. The warranty excludes faults due to accident, neglect, misuse, not following the Instructions and normal wear and tear. This warranty is in addition to your legal rights. Goods will only be collected from the original delivery address.

A charge may be made where the goods cannot be repaired under the terms of the warranty. You will be advised before this is made.

T: +44 (0)1626 835552 E: info@smirthwaite.co.uk

7.0 CONTINUOUS IMPROVEMENT

Smirthwaite are committed to continuous improvement to their product range. Should you have any suggestions or comments please contact our product design department, using info@smirthwaite.co.uk

Smirthwaite reserves the right to change the specification or material without prior notice.

For catalogues, help and further information on our products please contact us at:

Smirthwaite Ltd
16 Wentworth Road
Heathfield Industrial Estate
Newton Abbot
Devon
TQ12 6TL

T: +44 (0)1626 835552
F: +44 (0)1626 835428
E: info@smirthwaite.co.uk









Smirthwaite, 16 Wentworth Road, Heathfield, Newton Abbot, Devon.TQ12 6TL
T: +44 (0) 1626 835552 F: +44 (0) 1626 835428 E: info@smirthwaite.co.uk www.smirthwaite.co.uk

