



# Product Factsheet

## Asiento

# Welcome to Asiento!

**Asiento has been designed specifically for children, teenagers and adults with moderate to complex needs.**

Created to achieve improved postural support and symmetry, the Asiento delivers many benefits to the user and those around them, including:

- enhanced eye contact and communication
- improved interaction, breathing and eating
- greater participation in play and activities

Ultimately, the Asiento has been designed to help the user achieve their full potential while increasing their self-esteem and well-being.

To gain these benefits, it's important that the Asiento is correctly fitted, that's why our customer support team and technical product advisors are here to work with you. We're here to help.

## Standard features:

- Dynamic back
- Bodypoint harness
- Electric hi-lo base
- Highly adjustable

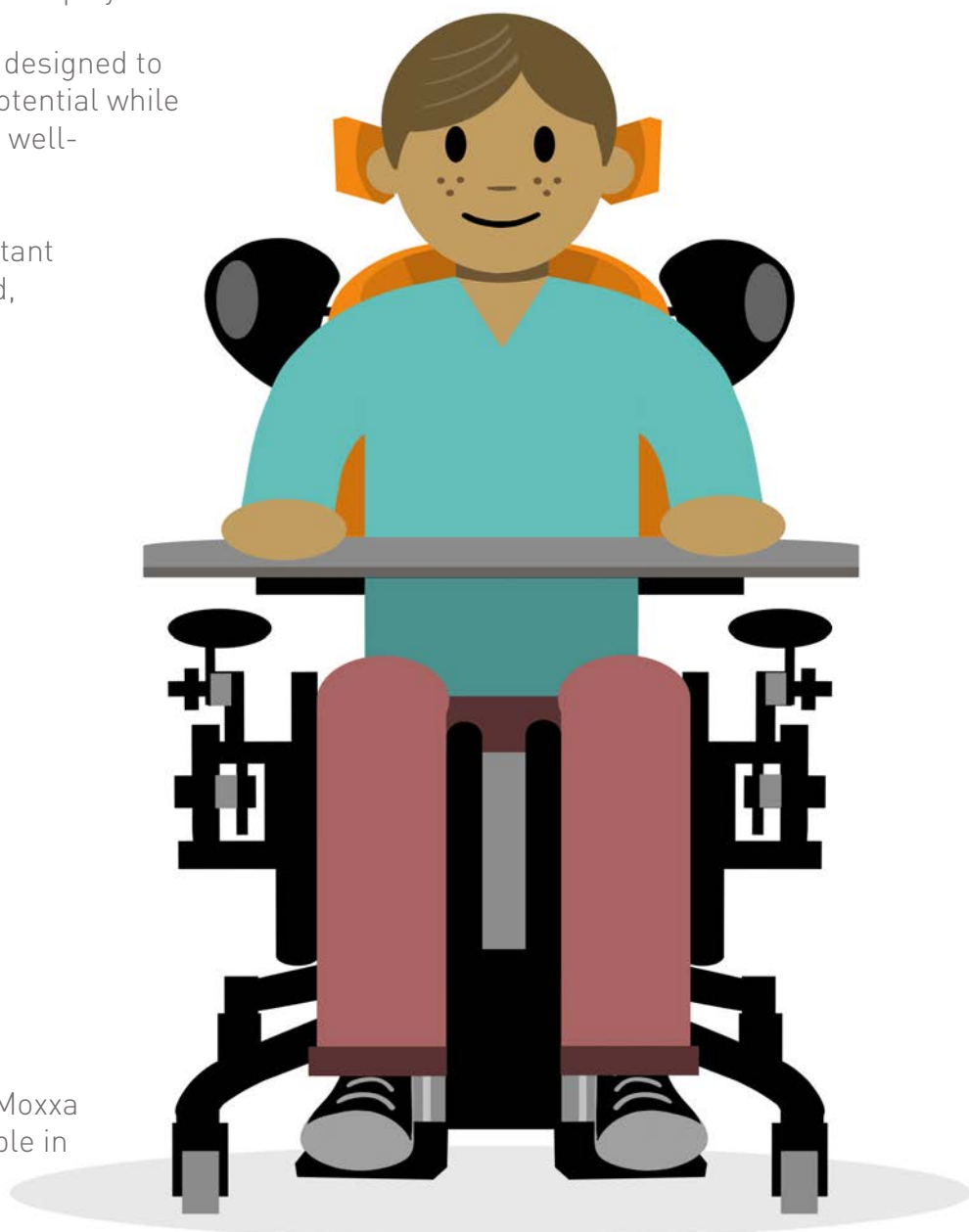
## Available Sizes:



## Available Colours:



The above colours are from our Moxxa range. The Asiento is also available in our Just Colour vinyl. Detailed colour charts can be seen on our website.



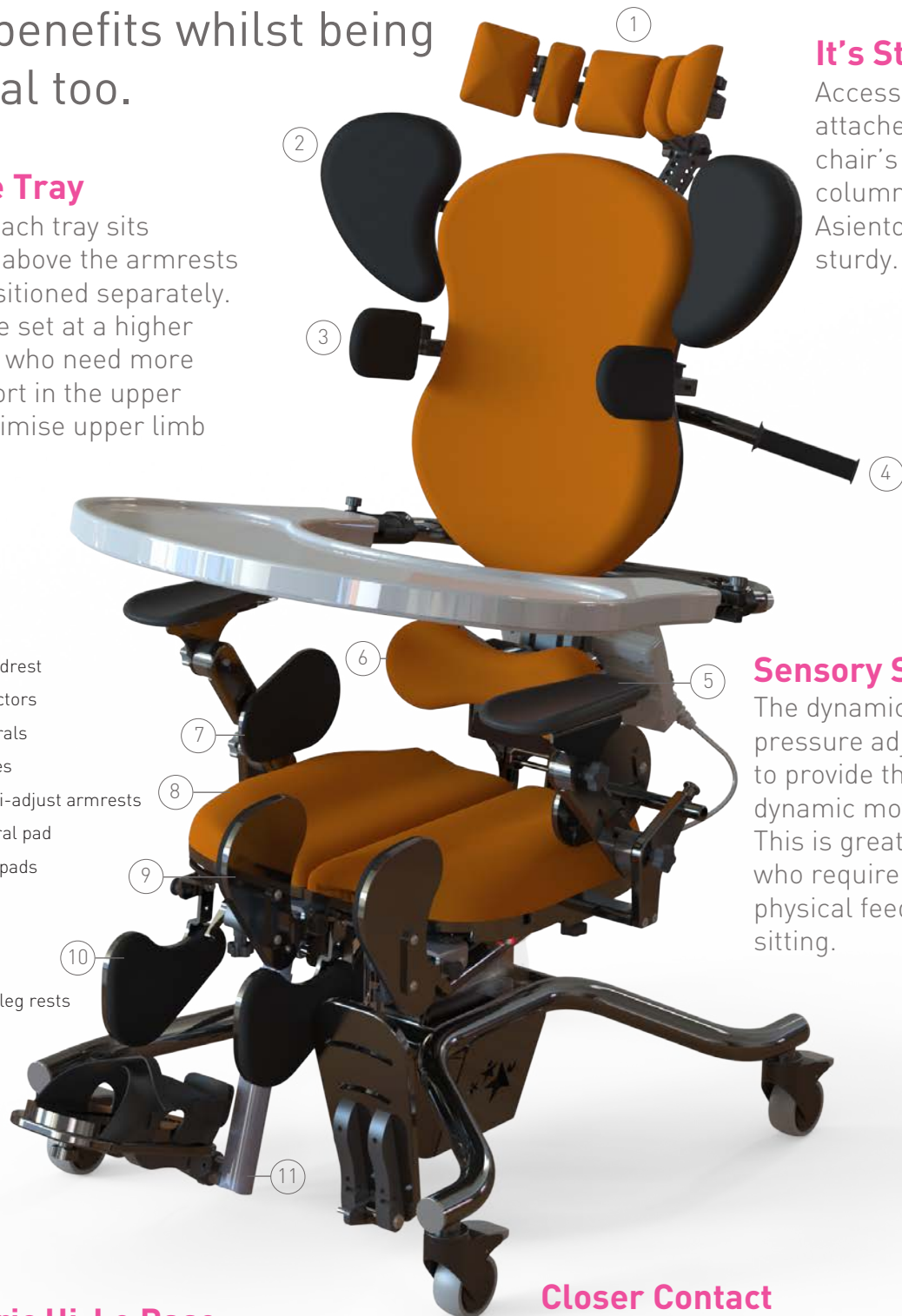
# What Makes Asiento Great?

With high adjustability, Asiento delivers excellent clinical benefits whilst being functional too.

## Easy to Use Tray

The easy to attach tray sits independently above the armrests and can be positioned separately. The tray can be set at a higher level for users who need more postural support in the upper trunk or to optimise upper limb function.

1. Multi-adjust headrest
2. Shoulder protractors
3. Swing away laterals
4. Push-bar handles
5. Removable multi-adjust armrests
6. Multi adjust sacral pad
7. Pelvic stabilizer pads
8. Split seat
9. Adduction pads
10. Abduction pads
11. Multi-positional leg rests



## It's Strong

Accessories are attached to the chair's strong central column making the Asiento robust and sturdy.

## Sensory Support

The dynamic back is pressure adjustable to provide the desired dynamic movement. This is great for users who require sensory and physical feedback whilst sitting.

## Quiet Electric Hi-Lo Base

With the electric hi-lo base, users can smoothly raise and lower the chair to the desired height with a user-operated remote control. It's quiet too, helping those who are sensitive to sound.

## Closer Contact

The open design of the chassis and pushbike handles allows carers to get close to the backrest. This is especially useful for upper-limb therapy, crossing midline, administering care and calming the user after an epileptic fit or when anxious.

# Product Specifications

| Size                                | 1                    | 2                    | 3                   |
|-------------------------------------|----------------------|----------------------|---------------------|
| Age range                           | 1-6 years            | 6-12 years           | 12-18 years         |
| Max user weight                     | 35kg                 | 65kg                 | 100kg               |
| Max user height                     | 110mm                | 150mm                | 180mm               |
| Back prone angle                    | 14°F/38°B            | 14°F/38°B            | 14°F/38°B           |
| Tilt in space                       | 15°F/25°B            | 15°F/25°B            | 15°F/25°B           |
| Back rest height                    | 280-460mm            | 480-660mm            | 580-760mm           |
| Chest width*                        | 150-250mm            | 200-340mm            | 280-490mm           |
| Seat width                          | 285mm                | 410mm                | 480mm               |
| Seat width between thighs (min-max) | 150-250mm            | 200-300mm            | 240-480mm           |
| Seat height from floor (min-max)    | 370-620mm hi-lo base | 370-620mm hi-lo base | 445-695mm star base |
| Seat depth (min-max)                | 150-300mm            | 250-400mm            | 330-530mm           |
| Split seat                          | 150mm                | 150mm                | 200mm               |
| Lower length seat for footplate     | 150-250mm            | 215-350mm            | 340-490mm           |
| Independent leg length elevation    | 90°F/20°B            | 90°F/20°B            | 90°F/20°B           |
| Thigh guide travel adjustment**     | 70mm                 | 70mm                 | 70mm                |
| Lateral supports travel adjustment  | 60mm                 | 80mm                 | 100mm               |
| Abduction pad travel adjustment**   | 50mm                 | 70mm                 | 95mm                |
| Adduction pad travel adjustment**   | 95mm                 | 95mm                 | 95mm                |
| Footplate angle                     | 90° flip up          | 90° flip up          | 90° flip up         |
| Abduction angle                     | 15°                  | 15°                  | 15°                 |
| Adduction angle                     | 15°                  | 15°                  | 15°                 |
| Plantarflexion/Dorsiflexion angle   | 45°up/45°down        | 45°up/45°down        | 45°up/45°down       |
| Arm rest height (min-max from seat) | 100-270mm            | 100-270mm            | 100-270mm           |
| Arm rest angle                      | 45°F/45°B            | 45°F/45°B            | 45°F/45°B           |
| Tray size                           | 500x420mm            | 695x580mm            | 695x580mm           |
| Seat weight                         | 32.5kg               | 35.5kg               | 38.5kg              |
| Chassis weight                      | 20kg hi-lo base      | 20kg hi-lo base      | 17.5kg star base    |
| Head rest lateral movement***       | 150mm                | 150mm                | 150mm               |

\* Distance between lateral supports

\*\* Thicker pads can be added

\*\*\* Dependant on type

**Smirthwaite Ltd, 16 Wentworth Road, Heathfield, Newton Abbot, Devon, UK, TQ12 6TL**

**t: +44 (0) 01626 835552 e: info@smirthwaite.co.uk**

**www.smirthwaite.co.uk**