



Therapy & Stools

seating • standing • toileting • bathing
changing • showering
desks • tables • sleeping • therapy
sensory • moving • handling



supporting children and
their families **for life**

welcome

Since 1986, Smirthwaite has developed and retained its reputation as one of the leading designers & manufacturers of special needs equipment. In that time, we have dedicated ourselves to finding and providing effective solutions that offer significant benefits to babies, children and young adults in their daily lives. Working closely with children, parents, carers and therapists, we have developed a comprehensive range of seating, standing, tables, desks, toileting, bathing, changing, showering, moving & handling, sleeping, therapy and sensory products.



Innovation in our design

Special needs equipment is often overly complex, difficult to use and expensive to maintain. At Smirthwaite, we believe in well-made, easy to use products that stand the test of time. Through close consultation with leading therapists, parents and end users, we ensure our designs offer numerous clinical benefits whilst maintaining a customer-centric and innovative approach.

Easy to clean

All of our products are easy to clean. For instance, our wooden chairs have anti-microbial properties that ensure surfaces are kept hygienic. This helps to reduce any risk of cross infection and is especially useful in multi-user environments such as nurseries and schools.

All our upholstery is carefully chosen due to its clever material make up that contains antibacterial agents that help against the spread of MRSA, E coli and other bacteria.

Warranty & servicing

All of our products come with a two year warranty as standard. An inspection, maintenance, service and repair facility for all Smirthwaite products is available to you, for complete peace of mind. This can be scheduled at a time that is convenient for you.

Call our Customer Services team today on **+44 (0)1626 835552** or e-mail **info@smirthwaite.co.uk** to book your service, inspection or repair.

Therapy & stools

Therapy and conductive education plays a central role in helping children to keep active, manage symptoms and recover from illness or injury.

We can provide therapy equipment suitable for many different types of therapy, helping children to unlock their potential and maximise their development.

We specialise in Conductive Education but can tailor products to suit a wide variety of therapies.

So what is Conductive Education?

Conductive Education (CE) is a holistic system of learning (hence education) for children and adults with neurological motor disorders which affects their ability to control movement and which can also cause a wide range of developmental difficulties. As well as motor difficulties, a further implications of damage to the central nervous system most likely will affect their social, communication and problem solving skills as well as their confidence. Conductive Education was initially developed for the needs of children with cerebral palsy although nowadays it is used to help all age group children and adults with other neurological disorders such as Parkinsons, multiple sclerosis, strokes and head injuries.

Conductive Education is an active and open lifelong approach for many children and adults that helps them living with their disabilities without fighting against them. It is a method of learning their own ways of doing 'things' and how to facilitate and manage their difficulties in a socially inclusive environment and then at any further stage of their lives.

The impact of CE can be seen not only in the improvement of their motor skills and functions but also in the development of their individual personalities and when they feel more positive about their future to lead independent, fulfilled lives at home, school or work.

Conductive Education it is not a cure – it is a long term process that can transform lives of many who with support of their families and friends are willing to stay committed, determined and motivated. Its ultimate goal is to allow them achieving their full potential in everyday situations today as well as in the future.

contents

therapy & stools

| | |
|-------------------------|----|
| conductive edu. packs | 3 |
| footrests, steps & bars | 4 |
| ladders | 5 |
| ladder back chairs | 6 |
| plinths & accessories | 7 |
| therapy bench & bolster | 9 |
| wheely stools | 10 |
| colours | 11 |

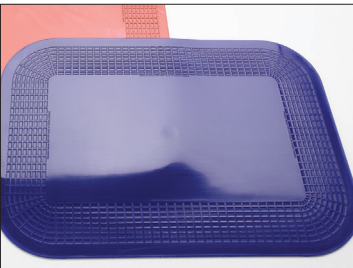
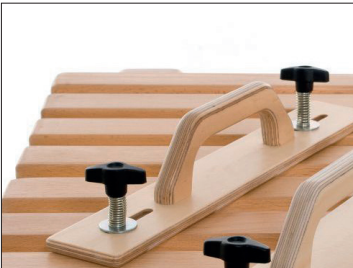


conductive education packs

“Our Plinth plays a key role in our son’s therapy programme.”

footrests, steps & bars

buy online



Picked packs especially for home and school use. Easy ordering with single pack part numbers.

Our Infant Conductive Education Pack includes:

CODE 4140

- Folding Plinth in size 1
- Ladder and Platform in size 1
- Adjustable Height Box Stool in size 1
- 1 Handstick
- 125mm quick fix handrail
- Small quick fix mirror
- 1 Dycem mat (350mm x 250mm)
- Small plinth tray
- 25/50mm raise blocks

Our Junior Conductive Education Pack includes:

CODE 4141

- Folding Plinth in size 2
- Ladder and Platform in size 2
- Adjustable Height Slatted Stool in size 2*
- 1 Handstick
- 125mm quick fix handrail
- Large quick fix mirror
- 1 Dycem mat (350mm x 250mm)
- Half plinth cover board
- 50/70mm raise blocks

Interlocking steps
CODE 4188



Interlocking steps

Our 3 Interlocking Steps come complete with a single handrail that can be locked into position. All 3 steps have the same width (625mm) and depth (370mm). The lower step is at a height of 125mm, the middle step at 250mm and the platform at 375mm. Max user weight of 100kg and product weight of 20kg.

An extra handrail (CODE 4189) for the Interlocking steps is available to buy separately.

improving your child's balance

Parallel bars
CODE 4292 - 4293

Our Parallel Bars are height and width adjustable and aim to improve your child’s balance. They are extremely easy to use and adjust.



Interlocking footrest
CODE 4185-4186

Our Interlocking Footrest is portable and can be used with a number of seating or therapy products. There are three interlocking footrests and they can be used together or separately. Available in 2 sizes.



Parallel Bars technical data
all dimensions in mm unless otherwise stated

| Size | 1 | 2 |
|----------------------|------|------|
| Code | 4292 | 4293 |
| Length | 2000 | 2660 |
| Height min | 360 | 500 |
| Height max | 540 | 820 |
| Width min | 380 | 500 |
| Width max | 600 | 730 |
| Max user weight (kg) | 80 | 100 |
| Product weight (kg) | 15 | 25 |

Interlocking Footrest technical data
all dimensions in mm unless otherwise stated

| Size | 1 | 2 |
|----------------------|--------------|---------------|
| Code | 4185 | 4186 |
| Width | 390 | 420 |
| Depth | 340 | 300 |
| Height min | 50 | 75 |
| Height max | 140 | 230 |
| Heights individually | 50 - 63 - 75 | 75 - 88 - 100 |
| Max user weight (kg) | 80 | 80 |
| Product weight (kg) | 5 | 5 |

ladders

Walking ladders

Our Walking Ladders are designed to assist with standing and walking. They also offer support when the ladders are held during sitting and toileting. A Ladder footboard (CODE 4321) is also available to help keep the legs abducted whilst walking.

Ladders & platforms

Our Ladders and Platforms are ideal for therapy programmes and can be used for sitting as well as standing. With 3 sizes of Platforms and a variety of accessories, you can build the Ladder to suit your child’s needs. (platforms cannot be used on the walking ladders).

Ladder technical data

all dimensions in mm unless otherwise stated

| Size | 1 | 2 | 3 |
|----------------------|------|------|------|
| Code | 4373 | 4374 | 4375 |
| Height | 900 | 1200 | 1500 |
| Width | 500 | 500 | 500 |
| Rung diameter | 22 | 22 | 22 |
| Max User weight (kg) | 50 | 50 | 50 |
| Product Weight (kg) | 9 | 12 | 15 |

Platform technical data

all dimensions in mm unless otherwise stated

| Size | 1 | 2 | 3 |
|----------------------|------|------|------|
| Code | 4376 | 4377 | 4378 |
| Width | 400 | 400 | 400 |
| Depth | 250 | 300 | 350 |
| Max User weight (kg) | 50 | 50 | 50 |
| Product Weight (kg) | 3 | 4 | 5 |

optional accessories



Ladder box

CODE 4370 (available for all ladders with a rung diameter of 19mm or 22mm)



Adjustable platform armrests

CODE 4470 (pair)



Adjustable platform supports

CODE 4460 (pair)

“Our Plinth plays a key role in our son’s therapy programme.”

 buy online

Walking Ladder technical data

all dimensions in mm unless otherwise stated

| Size | 1 | 2 | 3 |
|----------------------|------|------|------|
| Code | 4313 | 4314 | 4315 |
| Height | 900 | 1200 | 1500 |
| Width | 550 | 600 | 650 |
| Rung diameter | 19 | 22 | 25 |
| Max User weight (kg) | 50 | 50 | 50 |
| Product Weight (kg) | 7 | 8 | 9 |



High & low ladder back chairs

Our Ladder Back Chairs help to improve concentration and engage your child through a structured therapy programme. Designed for progressive use by children from an early age. Available with high and low back.

Designed for progressive use

Wall ladder

Our Wall Ladders promote independence. An acrylic plastic safety mirror can be fitted behind the Wall Ladder allowing children to see themselves whilst using the ladder.



Wall ladder

CODE 4334-4335

Mirror

CODE 4336 (520 x 1200mm)

CODE 4337 (670 x 1200mm)



Floor stepping ladder

Our Floor Stepping Ladders can help with balance and coordination. They are also foldable for easy storage.



Floor stepping ladder

CODE 4307 (2400 x 500mm)

High & low Ladder back chairs technical table

all dimensions in mm unless otherwise stated

| Back type | High back | | | Low back | | |
|--------------------------|-----------|------|------|----------|------|------|
| Size | 1 | 2 | 3 | 1 | 2 | 3 |
| Code | 4386 | 4387 | 4388 | 4381 | 4382 | 4383 |
| Ladder height | 900 | 1130 | 1355 | 600 | 750 | 900 |
| Seat width | 450 | 450 | 450 | 300 | 350 | 370 |
| Seat depth | 375 | 400 | 425 | 250 | 290 | 340 |
| Seat height ¹ | 375 | 400 | 425 | 290 | 330 | 370 |
| Max User weight (kg) | 60 | 60 | 60 | 60 | 60 | 60 |
| Product Weight (kg) | 8 | 9 | 10 | 6 | 7 | 8 |

1 Measured from floor to top of seat

Wall ladder technical data

all dimensions in mm unless otherwise stated

| Size | 1 | 2 |
|----------------------|------|------|
| Code | 4334 | 4335 |
| Height | 1200 | 1500 |
| Width | 600 | 750 |
| Rung spacing | 75 | 100 |
| Rung diameter | 22 | 25 |
| Max User weight (kg) | 50 | 50 |
| Product Weight (kg) | 8 | 9 |



plinth

buy online

Plinths

Our highly popular Stacking Plinths can be used for individual or group work. For areas that are limited in space, our Folding Plinths provide an ideal storage solution.

Customise

To meet your child’s needs you can customise your Plinth with a variety of accessories. These are all aimed at supporting your child’s individual therapy programme.

Cut-out

The option to have cut-outs on either side of your Plinth will give your child more room and better alignment. Cut-outs in a number of sizes are available on request.



provides an ideal storage solution

Folding & Stacking Plinths technical data

all dimensions in mm unless otherwise stated

| Size | 1 | 2 | 3 | 4 |
|----------------------|------|------|------|------|
| Length | 1070 | 1500 | 1675 | 1830 |
| Width | 665 | 745 | 840 | 840 |
| Max User weight (kg) | 100 | 100 | 100 | 100 |
| Product Weight (kg) | 15 | 20 | 25 | 30 |

Please choose your code from the following height options

| Size | 1 | | 2 | | 3 | | 4 | |
|--------------|---------|----------|---------|----------|---------|----------|---------|----------|
| Plinth type | Folding | Stacking | Folding | Stacking | Folding | Stacking | Folding | Stacking |
| Height 380mm | 4500 | 4530 | 4507 | 4537 | 4514 | 4544 | 4521 | 4551 |
| Height 460mm | 4501 | 4531 | 4508 | 4538 | 4515 | 4545 | 4522 | 4552 |
| Height 520mm | 4502 | 4532 | 4509 | 4539 | 4516 | 4546 | 4523 | 4553 |
| Height 580mm | 4503 | 4533 | 4510 | 4540 | 4517 | 4547 | 4524 | 4554 |
| Height 640mm | 4504 | 4534 | 4511 | 4541 | 4518 | 4548 | 4525 | 4555 |
| Height 700mm | 4505 | 4535 | 4512 | 4542 | 4519 | 4549 | 4526 | 4556 |
| Height 740mm | 4506 | 4536 | 4513 | 4543 | 4520 | 4550 | 4527 | 4557 |

plinth

optional accessories



Quick fix plinth tray
CODE 4263-4264
Ideal for a variety of activities
Easy to use and clean



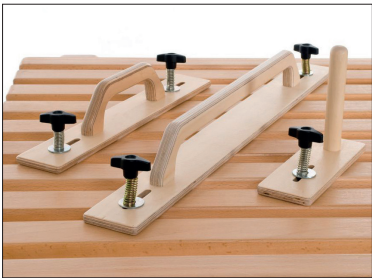
Plinth coverboards
CODE 4226-4229 (half)
Transforms a plinth into a table



Raise blocks
CODE 4210-4214
A quick and simple method of raising the height of a plinth



Suction hand grabs
CODE 4201-4203
Used to stabilise the hand to increase function in the opposing hand



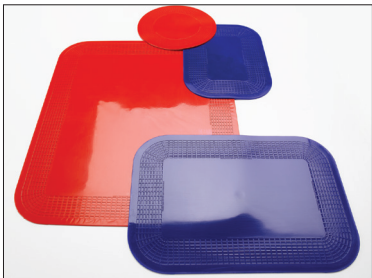
Quick fix handrails
CODE 4205-4207
Will fit along, across or diagonally on any sized Slatted plinth



Handstick
CODE 4197 (single)
CODE 4198 (set of 5)
Can help to strengthen grip and increase dexterity



Quick fix plastic mirror
CODE 4273 small (250 x 200mm)
CODE 4274 large (300 x 200mm)
Easy to attach and allows children to see themselves whilst using a plinth



Dycem non-slip mats
CODE 4703 red or blue (250 x 180mm)
CODE 4706 red or blue (350 x 250mm)
CODE 4709 red or blue (450 x 380mm)
CODE 4700 red or blue (round 190mm)



therapy bench

buy online

Our popular height and angle adjustable Therapy Bench together with accessories¹ is designed to assist in a wide range of children’s therapy programmes both at home and school.

Therapy Bench technical data

all dimensions in mm unless otherwise stated

| Size | 1 | 2 | 3 | 4 | 5 | 6 | 7 | 8 |
|----------------------|------|------|------|------|------|------|------|------|
| Code | 5541 | 5542 | 5543 | 5544 | 5545 | 5546 | 5540 | 5547 |
| Length | 610 | 610 | 820 | 820 | 820 | 820 | 680 | 800 |
| Width | 250 | 300 | 300 | 380 | 325 | 380 | 280 | 360 |
| Min height | 195 | 195 | 280 | 280 | 405 | 405 | 170 | 270 |
| Max height | 295 | 295 | 455 | 455 | 705 | 705 | 270 | 400 |
| Max user weight (kg) | 100 | 100 | 100 | 100 | 100 | 100 | 100 | 100 |
| Product weight (kg) | 7 | 8 | 11 | 12 | 15 | 16 | 10 | 11 |

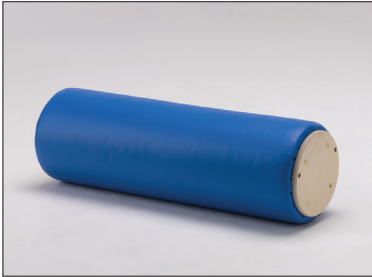
Colours



“For our children, we look for products that will have great clinical benefits for the management of their posture.”
Anna, Teacher, Midlands

therapy bolster

buy online



Therapy bolster
CODE 5861 - 5866



Low end (single)
CODE LG014
(W 500mm x H 450mm)



High end (single)
CODE LG013
(W 500mm x H 700mm)

Therapy Bolster technical data

all dimensions in mm unless otherwise stated

| Size | 1 | 2 | 3 | 4 | 5 | 6 |
|----------------------|------|------|------|------|------|------|
| Code | 5861 | 5862 | 5863 | 5864 | 5865 | 5866 |
| Length | 600 | 1200 | 600 | 1200 | 600 | 1200 |
| Height min | 300 | 300 | 325 | 325 | 350 | 350 |
| Height max | 475 | 475 | 500 | 500 | 525 | 525 |
| Diameter | 200 | 200 | 250 | 250 | 300 | 300 |
| Max user weight (kg) | 100 | 100 | 100 | 100 | 100 | 100 |
| Product weight (kg) | 6 | 11 | 8 | 13 | 10 | 15 |

Colours

Our Therapy Bolster is extremely versatile and can be used just as a roll or built up to have a combination of High ends or Low ends.

wheely stools

buy online



adjustable height wheely stool

Colours

- Red upholstery & yellow frame
- Green upholstery & blue frame
- Pink upholstery & blue frame



Therapist’s favourite

The Adjustable Height Stool is our most popular wheely stool. It has been designed specifically for working at lower levels with your child, student or client. The stool is designed for sitting astride the narrower side. Available in 3 colour options with a height range of 340-460mm. One size only.

Adjustable Height Wheely Stool technical data

all dimensions in mm

| Code | Size | Colour | Width | Height min | Height max | Max user weight (kg) | Product weight (kg) |
|------|------|--------------|-------|------------|------------|----------------------|---------------------|
| 4181 | 1 | Red & yellow | 450 | 340 | 460 | 100 | 7 |
| 4182 | 1 | Green & blue | 450 | 340 | 460 | 100 | 7 |
| 4184 | 1 | Pink & blue | 450 | 340 | 460 | 100 | 7 |
| 4192 | 1 | Red & yellow | 500 | 340 | 460 | 150 | 8 |
| 4193 | 1 | Green & blue | 500 | 340 | 460 | 150 | 8 |
| 4194 | 1 | Pink & blue | 500 | 340 | 460 | 150 | 8 |

Round Wheely Stool technical data

all dimensions in mm

| Code | Size | Colour | Height | Diameter | Base | Max user weight (kg) | Product weight (kg) |
|------|------|--------------|--------|----------|----------|----------------------|---------------------|
| 4178 | 1 | Pacific blue | 400 | 360 | 480 x 48 | 100 | 9 |
| 4179 | 1 | Deep pink | 400 | 360 | 480 x 48 | 100 | 9 |



round wheely stool

Colours



Space saving for therapists

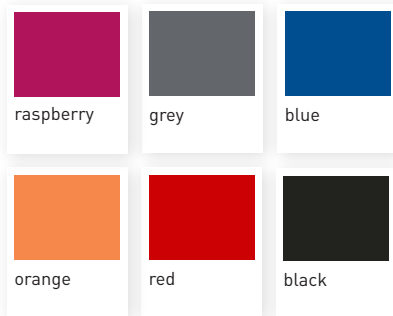
Our space saving, Round Wheely Stool is a popular choice for therapists, teachers and parents when working at a low level with children. The stool comes in our natural wood finish and is available in one size only.

¹ Therapy Bench accessories, as shown in the image on the page opposite: Adjustable backrest with pelvic guides CODE **BK091** and Adjustable femoral kneeblocks (pair) CODE **KN002**

seating standing toileting bathing changing showering
desks tables sleeping therapy sensory moving handling

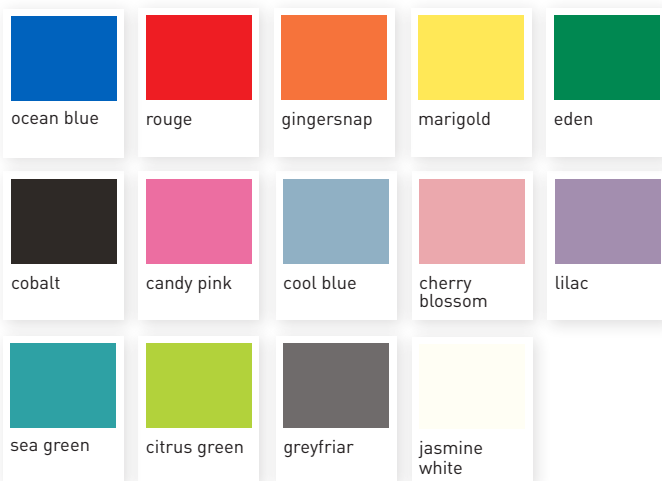
colours

Moxxa range - brushed/soft finish smooth vinyl



Moxxa range can be used on most products

Just Colour range - vinyl



Just Colour range can be used on most products

Colours are a guide only and may vary due to limitations of the print process. Material samples are available upon request. Colour range may change without prior notice, we try to colour match where possible.



always here to help

UK Contact Details:

telephone

+44 (0)1626 835552

email

info@smirthwaite.co.uk

website

www.smirthwaite.co.uk

Smirthwaite Ltd

16 Wentworth Road, Heathfield,
Newton Abbot, Devon TQ12 6TL

Smirthwaite reserves the right to modify product specifications at anytime without prior notification. All measurements are approximations and can vary depending on the wood and materials used. All details shown are correct at time of print. Smirthwaite® is a registered trade mark of Smirthwaite Limited.

