

i-Size car seat

STATURE 61-150CM

INSTRUCTIONS FOR USE



The product has been approved according to the European safety standards (ECE R129/04 with S) and is suitable for stature 61-150 cm.

1 Introduction

Thank you for choosing our product. The Qai car seat has been designed to provide maximum safety and comfort for your child. To ensure its safe use, it is crucial to properly adjust the seat to your child's height and follow the usage guidelines. Before using the seat, please read these instructions for use carefully. Our product provides the highest level of protection only when used according to the recommendations. Through research and user feedback, we continuously improve our products to always meet the latest child safety standards. If you have any questions regarding the use of the seat, please contact the dealer or us directly at: support@simonseat.com. We wish you a safe journey.



Before installing the seat in your vehicle for the first time, please read carefully these instructions for use and the instructions of the vehicle in which the seat will be installed. Following the notes and recommendations given in this instruction has a direct impact on the safety of your child in the vehicle.

2 Important information and warnings

The Qai car seat is a restraint device for children with special needs and a height of 61 - 150 cm. It is intended for use in "i-Size" seating positions according to the vehicle's user manual. The product has been approved for use in accordance with UN ECE Regulation No. 129/04. After adjusting the seat for a child taller than 135 cm, ensure that the seat fits properly in the vehicle.

The i-Size category restraint device for children with special needs is designed to provide additional support for children with reduced muscle tone who have difficulty maintaining proper posture on standard seats (e.g., children with cerebral palsy, muscular dystrophy, or post-stroke). The car seat improves the child's sitting position stability with additional features such as lateral supports, abduction wedge, additional hip pads, tray, footrest for children over 100 cm tall.

These solutions allow for individual adjustment of the device to the child's needs, increasing their comfort and safety during travel. Before using the car seat for the first time, consult a doctor to ensure the device is suitable for the child.



Read these instructions for use carefully. To be able to use the restraint device in the future, keep the instructions for use in an easily accessible and safe place. The restraint device in the swivel base has a storage compartment for the instruction. If you have any doubts, contact the dealer or the manufacturer.



The correct fitting of the ISOFIX and support leg anchoring system is of vital importance for the safety of your child.



Do not use a child safety seat if the vehicle seat is equipped with a front active airbag. This can be dangerous. This does not apply to side airbags.



Never leave your child unattended in the car.



The restraint device should not be moved with the child inside.



During the use and handling of the product, as well as during its assembly or adjustment of mechanisms, there is a risk of entrapment and/or pinching of the user's or operator's body parts in the openings/gaps between the elements. These activities should be performed with particular caution. After completing the adjustments, stabilize the position of the elements by securely tightening the nuts and bolts.



The device does not contain substances that may pose a threat to life or health.



Forward-facing restraint devices should not be used if the child is under 15 months old.



The restraint device can only be installed on a forward-facing seat using the ISOFIX mounting system and the support leg.



The restraint device can be used on both the front and rear seats. However, it is recommended to install it on the rear seat.



Before purchasing, please check if the restraint device can be properly installed in the vehicle.



During installation, special attention should be paid to ensure that the elements of the restraint device are not trapped during normal operating conditions by seat adjustments or closing the vehicle doors.



Ensure that the restraint device has not been damaged by luggage, seat adjustments, or during the closing of car doors, etc.



The restraint device should not be used when it is not properly installed in the vehicle, even for testing purposes.



The restraint device should be secured with a seat belt or ISOFIX mount and support leg even when not in use. An unsecured device can injure other passengers in the event of sudden braking.



The seat belts securing the child should be properly tightened, untwisted, and adjusted to fit the child's body.



Ensure that the lap belt is fastened low, so that the child's pelvis is well secured.



The belts and posture support elements should be adjusted to fit the child's body and should not be twisted.



If the car seat is involved in an accident, discontinue its use and replace the device with a new one.



It is recommended that the restraint device be used for no longer than 10 years from the date of manufacture. The properties of the product may deteriorate, for example, due to the aging of plastic components, and this may not be visible.



For safety reasons, all luggage and other items in the vehicle should be secured to prevent accidental movement, as they can cause injuries in the event of a collision.



The restraint device must not be used without upholstery or with upholstery other than that recommended by the manufacturer.



To prevent damage to the upholstery, do not remove the labels attached to it.



The harness with a crotch strap is essential for ensuring the appropriate level of safety for your child. Always use it when the child is between 61-105 cm tall.



Introducing modifications to the restraint device and/or using accessories not approved by the manufacturer may reduce the safety level offered by the Qai restraint device. Such a product should not be used, and the manufacturer is not responsible for the consequences of using the device with modifications and/or unapproved accessories.



Elements of the restraint device exposed to sunlight can heat up, which may cause burns to the child's skin. Before use, check the temperature of the restraint device. To prevent overheating, cover the car seat when it is not in use.



Take short breaks during long trips to give your child time to relax.



Set a good example for your child and always fasten your seat belt.



Explain to your child that they should never play with the harness buckle.



In case of any questions or doubts, contact the manufacturer of the restraint device or the dealer.



For safety reasons, do not leave a child unattended in the restraint device.



Any medical incidents that occur in connection with the use of the restraint device should be reported to the **MANUFACTURER** of the device and to the **APPROPRIATE** authorities depending on the location where the incident occurred.

The restraint device has been approved in accordance with European safety standards (R129/04 with S marking) and is intended for use:

- for a height of 61-105 cm (maximum child weight 18 kg) rear-facing, installation of the car seat using ISOFIX mount and support leg. The child is secured with a harness.
- for a height of 76-105 cm (maximum child weight 18 kg) forward-facing, installation of the car seat using ISOFIX mount and support leg. The child is secured with a harness.
- for a height of 100-150 cm forward-facing, installation of the car seat using ISOFIX mount. The child is secured with a 3-point seat belt installed in the vehicle.
- for a height of 100-150 cm forward-facing, the car seat along with the child is secured with a 3-point seat belt installed in the vehicle.

3 Indications for product use

The Qai restraint device is suitable for children with postural defects and muscle dysfunction. It is ideal for children with:

- children cerebral palsy,
- muscular dystrophy,
- various types of paralyses,
- tetra and paraplegias,
- as well as for children with body posture abnormalities, paresis, or motor impairments.

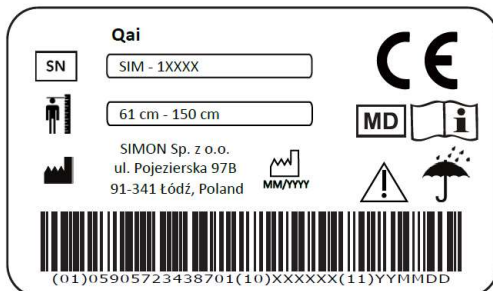
Lateral and hip supports and five-point belts allows you to safely transport your child in the car.

The device should not be used by a person when:

- the attending physician, in the patient's positioning recommendations, forbids the body to be placed in the positions indicated in the normal use of the product
- medical conditions do not permit use
- use of the device could cause the child's condition to deteriorate

Using the device in accordance with the recommendations of a physiotherapist or attending physician, as well as the information contained in the instructions for use, may have a beneficial effect on the patient/user by maintaining the effect of the ongoing rehabilitation and improving well-being.

4 Identification plate



5 Identification of symbols

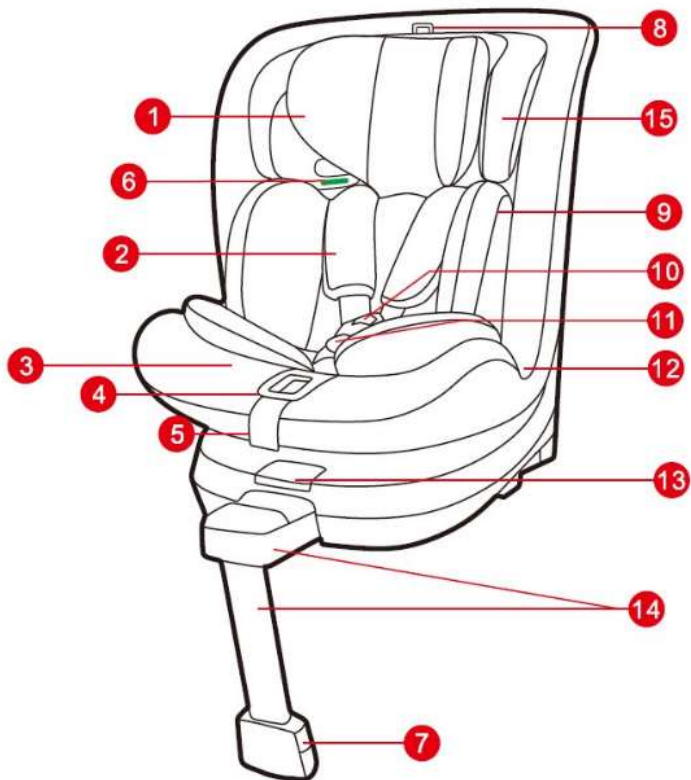
	Manufacturer name
	Date of production
	Serial number
	Permissible user height
	Avoid contact with water
	Note! Follow product instructions
	Medical device
	Conformity mark according to Regulation (EU) 2017/745 of the European Parliament and of the Council of 5 April 2017 on medical devices, Annex V
	Ban on disposal of the device to household waste-bin

6 Compliance with the safety requirements for medical devices

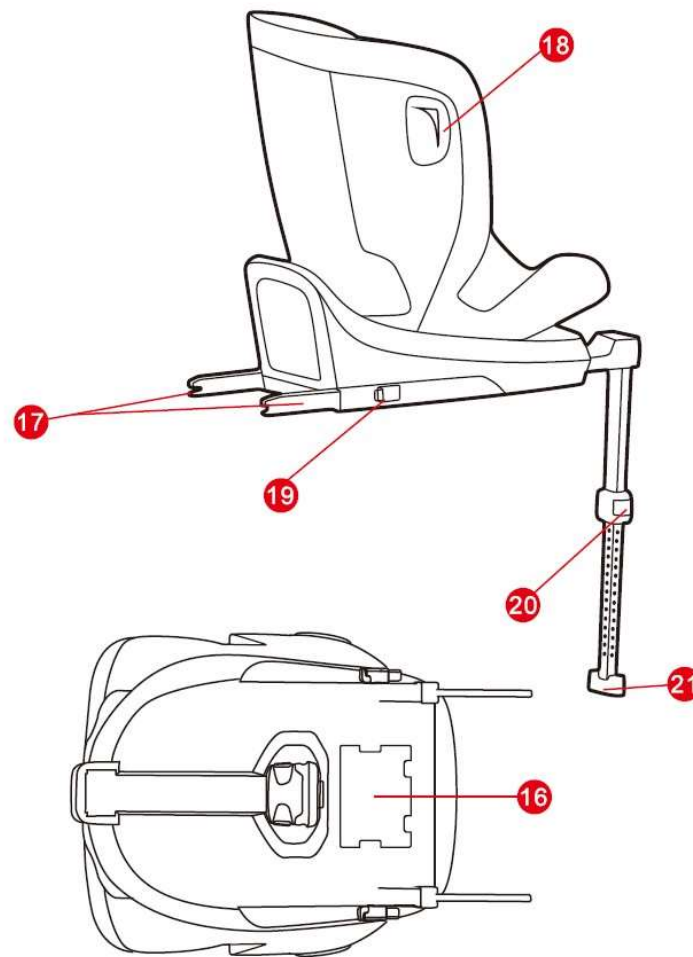
The Qai restraint device meets the requirements of Regulation (EU) 2017/745 of the European Parliament and of the Council of 5 April 2017 on medical devices.

According to Annex VIII of Regulation (EU) 2017/745 of the European Parliament and of the Council of 5 April 2017 on medical devices, the device is a non-invasive, non-active Class I medical device according to Rule 1. The device's declaration of conformity can be obtained from the manufacturer's Sales Department.

7 Construction of the Qai restraint device



- | | |
|------------------------------|--------------------------------|
| 1. Head insert | 9. Inner cushion (baby insert) |
| 2. Harness | 10. Harness buckle |
| 3. Seat | 11. Crotch strap |
| 4. Harness adjustment button | 12. Car seat body |
| 5. Harness adjustment strap | 13. Rotation button |
| 6. Belt guide | 14. Support leg |
| 7. Support leg indicator | 15. Headrest |
| 8. Headrest adjustment loop | |



- | | |
|----------------------------------|-----------------------|
| 16. Storage for the instruction | 21. Support leg block |
| 17. ISOFIX connectors | |
| 18. Side body | |
| 19. ISOFIX release button | |
| 20. Support leg adjusting button | |

8 Installation in the vehicle

8.1 Standard

Tested, certified, and approved in accordance with ECE R129*			
Stature	Facing direction	Installation	Approval type
61-105 cm	Rearward	ISOFIX + support leg + harness	i-Size
76-105cm	Forward	ISOFIX + support leg + harness	i-Size
100-150cm	Forward	ISOFIX + vehicle 3-point belt / Vehicle 3-point belt	i-Size Booster seat

8.2 With special needs equipment

Tested, certified, and approved in accordance with ECE R129 S*			
Stature	Facing direction	Installation	Approval type
61-105 cm	Rearward	ISOFIX + support leg + harness + (lateral supports, abduction wedge)	i-Size special needs restraint
76-105cm	Forward	ISOFIX + support leg + harness + (lateral supports, abduction wedge, additional hip pads, tray)	
100-150cm	Forward	ISOFIX + vehicle 3-point belt / Vehicle 3-point belt + (lateral supports, abduction wedge, footrest, additional hip pads, tray)	i-Size Booster seat special needs restraint

*ECE = European standard for restraint devices

The Qai child restraint device has been designed, tested, certified, and approved in accordance with the requirements of the European standard for child restraint devices for use in motor vehicles (ECER129/04 S).

NOTICE



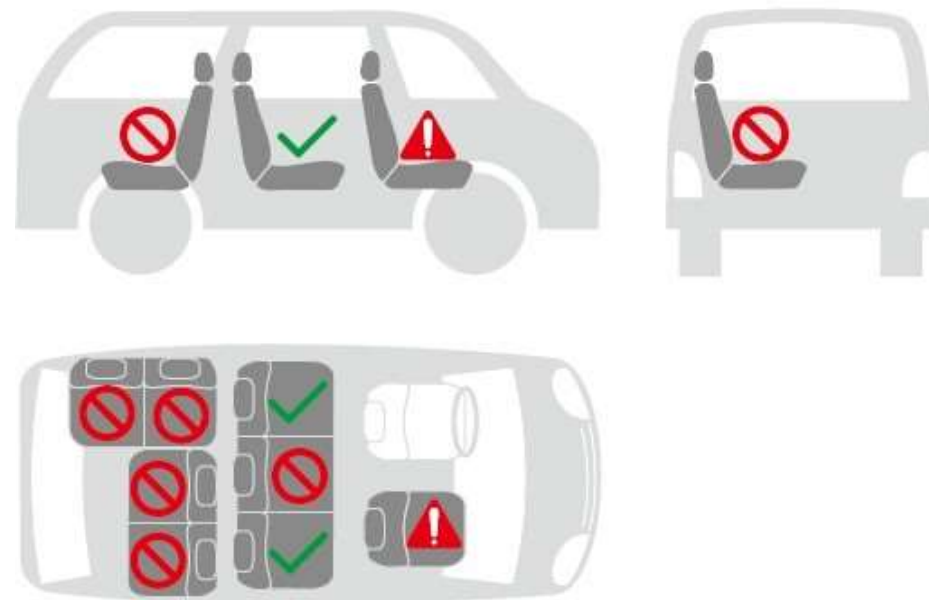
Never use this child restraint device in seating positions where an active air bag is installed. An active frontal airbag may cause death or seriously injury of your child in an accident.


Please read the instructions carefully and keep safe for future reference. There is an instruction compartment in the base of the child car seat for storage of the instruction.



Always secure your baby in the car seat using the harness or belts. Never leave your baby unattended in the car seat when placing it on moving surfaces (e.g. a table, nappy changing unit, etc.).

You can use your child car seat as follows:



On front passenger seat	 YES
Only if there is no airbag or it is turned off! There must be an ISOFIX system. (Slide the seat back and refer to vehicle instructions).	

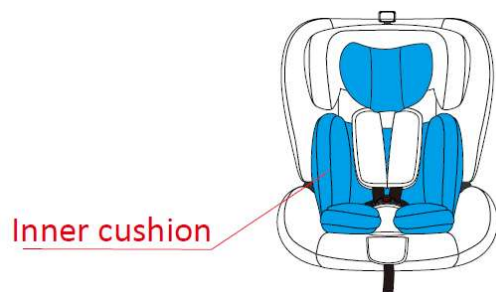


Never use the child car seat without its fabric cover. The fabric cover should not be replaced with any other than the ones recommended by the manufacturer. The fabric cover will affect the integral performance of the baby child restraint device. Never try any other force points than the indicated, the main force points of this product are the ISOFIX adapter and the support leg.

9 Securing your baby

9.1 Using Baby Insert

If your baby's stature is 75 cm or less, please install the inner cushion on baby car seat. If your baby's stature is $75 < X \leq 150$ cm, please take out the inner cushion baby car seat.

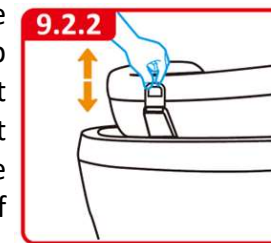


9.2 Harness system & Headrest adjust

Loosen the shoulder straps by pressing the harness adjusting button and pull the shoulder straps as far forward as possible.



Pull the headrest adjusting loop to adjust the headrest upwards, pull the headrest adjusting loop and push the headrest back to slide the headrest downwards. There are 10 adjustable headrest positions. Please adjust the headrest height to close to your child shoulder position, if at the middle of two positions, please use the higher position.



9.3 To change the reclining positions (tilt)

There are 5 recline positions of this product. To change the position, grasp the lever at the front of the seat, push or pull the seat into the desired position until you hear an audible sound "click".

Rearward facing reclining positions adjust for stature 61-105 cm.
The recline position 3,4,5 may not fit all vehicles.

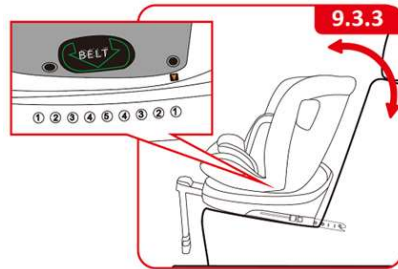


Forward facing reclining positions adjust for stature 76-105 cm.
The recline position 3,4,5 may not fit all vehicles.



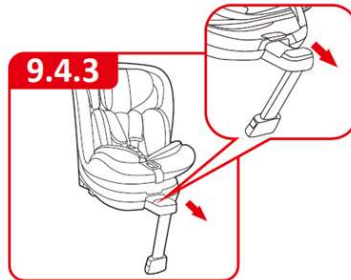
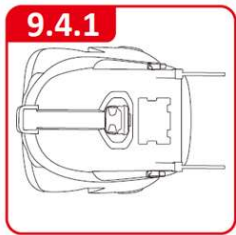
Forward facing reclining positions adjust for stature 100-150 cm.
The car seat must be used in most upright position.

If the child is between 100 and 150cm tall and is secured by a 3-point belt, it should only be used in an upright position. When the arrow label is aligned with the mounting label position 1, the seat is in an upright position.



9.4 Open support leg

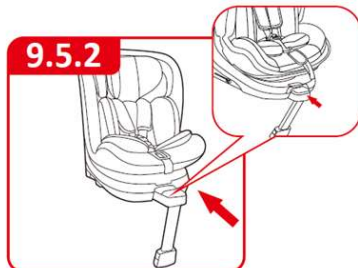
First, remove the supporting leg from the bottom of the seat. When the supporting leg is rotated outward to 45°, the supporting leg assembly can be pulled out outward.



The seat can only be rotated when the supporting leg assembly is extended.

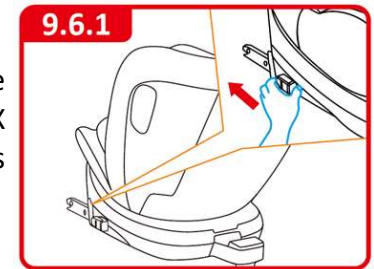
9.5 Retract support leg

Rotate the support leg backward to 45° and push the support leg assembly inward until it is fully in place. Finally, tuck the support leg into the slot at the bottom of the seat.

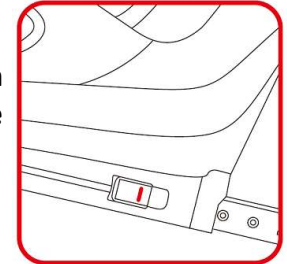


9.6 Installation instruction for STATURE 61-105cm, Rearward facing (ISOFIX + support leg + harness)

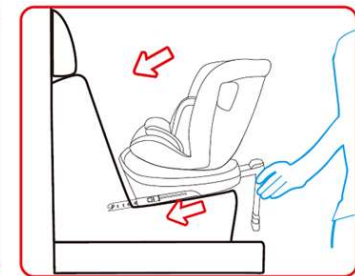
Unfold support leg until it locks in place according to section 9.4. Press the ISOFIX release button to slide the ISOFIX connectors to the end.



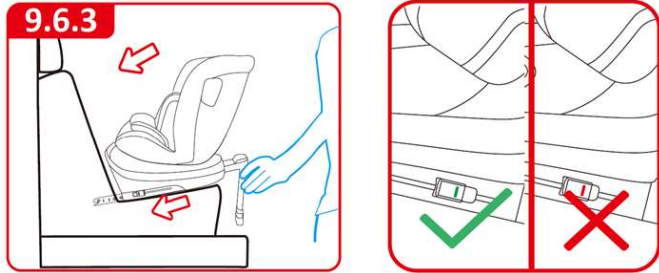
Caution: Please only move to the next step when ISOFIX has been slid to the end with appearing the red marks.



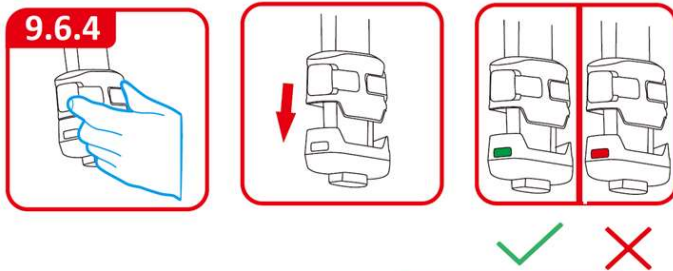
Push the ISOFIX connectors directly into the anchorages until you hear an audible sound "click".



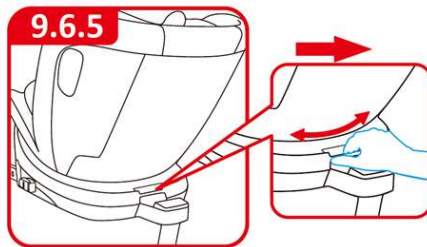
Grasp the seat body to check the seat if it is fastened tightly or shakes, meanwhile observe the ISOFIX red/green indicator. If the seat shakes and the ISOFIX connectors are pulled out, please repeat the above steps and install it again.



Squeeze the support leg adjusting button, pull out the support leg until it rests firmly on the floor. Observe the ISOFIX red/green indicator to confirm the installation status.



Press the rotating button, adjust the seat to sideward facing position allow access for placing a child on the seat unit after the car seat is fitted.



Before every journey, make sure that the rotating part has been fully engaged.



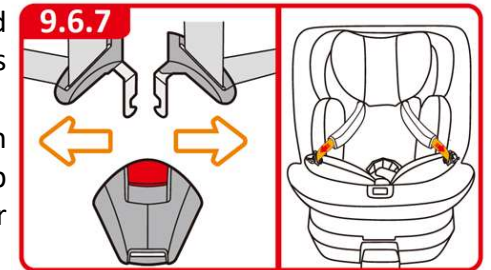
Do not drive unless the seat is in forward or rearward facing position. It is unacceptable to travel with the seat facing sideways.



The seat can be rotated 360° without any restrictions.



Loosen the shoulder straps by pressing the harness adjusting button and pull the harness shoulder as far forward as possible. Do not pull on the harness pads.



Open the buckle by pressing the red button, then fix the shoulder straps at the sides of the car seat.

At the bottom of the headrest, on both sides, there are magnets to help hold the harness pads for easier placement of the child in the seat.

Notice!!!

If you need to use a lateral supports, refer to Section 10.1 of this instruction.

Notice!!!

If you need to use an abduction wedge, refer to Section 10.3 of this instruction.



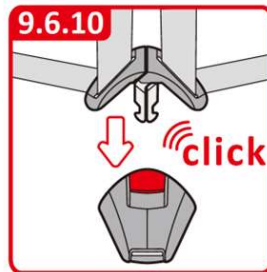
Place child in the car seat.

Please note a correctly adjust headrest ensures optimal protection for your child in the safety seat.

The headrest must be adjusted so that the shoulder straps are at the same level as your child's shoulders or slightly above.



Guide the two buckle latches together and engage them before putting them into the buckle, this should make a sound "click".



Tighten the harness adjusting strap and make sure the harness is reasonably tight. It should restrain but not make the child uncomfortable.

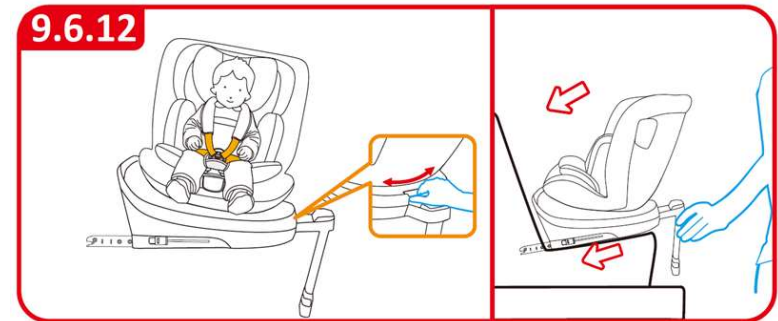


Please ensure that the lap strap is worn low down, so that the pelvis is firmly engaged. Pull on the strap until it lies flat and is close against your child's body. The straps should be correctly adjusted and ensure they are not twisted.



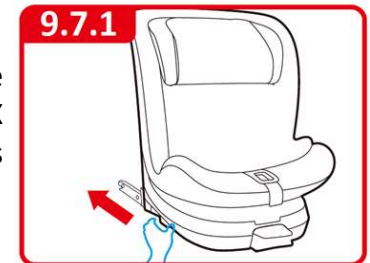
Pull the strap end straight towards you, not upwards or downward. Please pay attention to the strap end. Whilst travelling (especially outside the car) is should always be attached to the cover.

Press the rotating button to adjust the direction of the seat. Only rearward facing position is available for child up to 15 months of age.

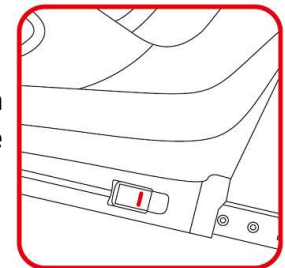


9.7 Installation instruction for STATURE 76-105cm, Forward facing (ISOFIX + support leg + harness)

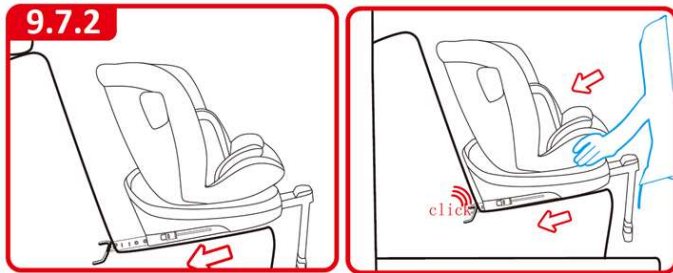
Unfold support leg until it locks in place according to section 9.4. Press the ISOFIX release button to slide the ISOFIX connectors to the end.



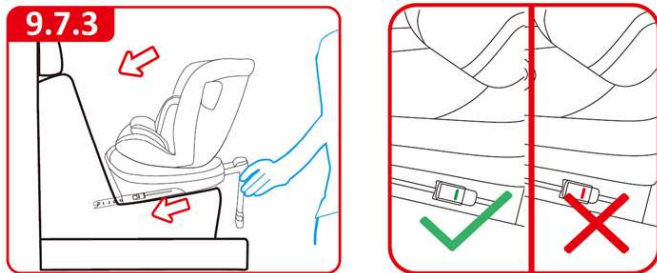
Caution: Please only move to next step when ISOFIX has been slid to the end with appearing the red marks.



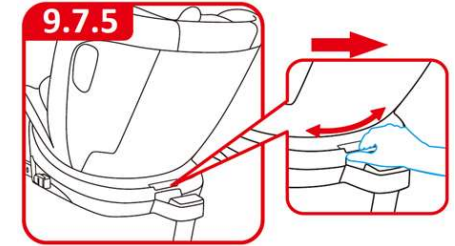
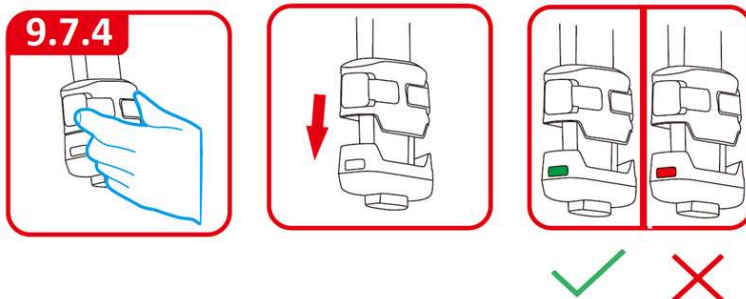
Push the ISOFIX connectors directly into the anchorages until you hear an audible sound "click".



Grasp the seat body to check the seat if it is fastened tightly or shakes, meanwhile observe the ISOFIX red/green indicator. If the seat shakes and the ISOFIX connectors are pulled out, please repeat the above steps and install it again.



Squeeze the support leg adjusting button, pull out the support leg until it rests firmly on the floor. Observe the ISOFIX red/green indicator to confirm the installation status.



Press the rotating button, adjust the seat to sideward facing position allow access for placing a child on the seat unit after the car seat is fitted.

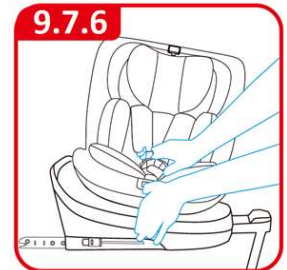


Before every journey, make sure that the rotating part has been fully engaged.

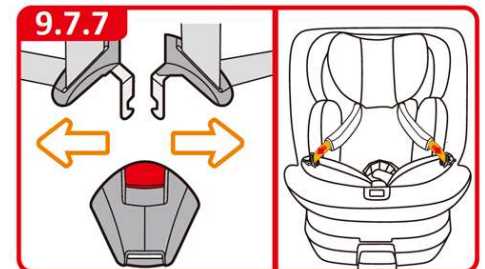
Do not drive unless the seat is in forward or rearward facing position. It is unacceptable to travel with the seat facing sideways.



The seat can be rotated 360° without any restrictions.



Remove the baby insert, loosen the shoulder straps by pressing the harness adjusting button and pull the harness shoulder as far forward as possible. Do not pull on the harness pads.



Open the buckle by pressing the red button, then fix the shoulder straps at the sides of the car seat. At the bottom of the headrest, on both sides, there are magnets to help hold the harness pads for easier placement of the child in the seat.

Notice!!!

If you need to use a lateral supports, refer to Section 10.1 of this instruction.

Notice!!!

If you need to use an additional hip pads, refer to Section 10.2 of this instruction.

Notice!!!

If you need to use an abduction wedge, refer to Section 10.3 of this instruction.

Place child in the car seat.

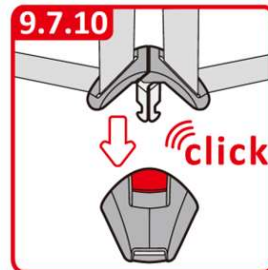


Please note a correctly adjust headrest ensures optimal protection for your child in the safety seat.

The headrest must be adjusted so that the shoulder straps are at the same level as your child's shoulders or slightly above.



Guide the two buckle latches together and engage them before putting them into the buckle, this should make a sound "click".



Tighten the harness adjusting strap and make sure the harness is reasonably tight. It should restrain but not make the child uncomfortable.



Please ensure that the lap strap is worn low down, so that the pelvis is firmly engaged. Pull on the strap until it lies flat and is close against your child's body. The straps should be correctly adjusted and ensure they are not twisted.

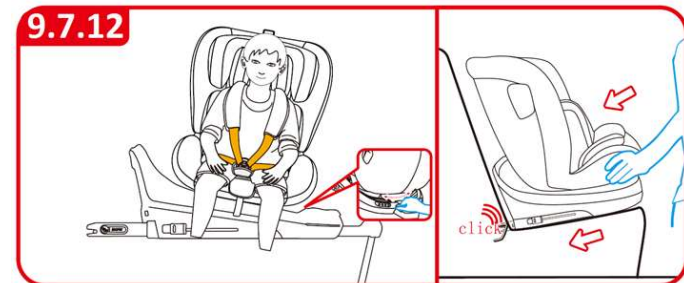


Pull the strap end straight towards you, not upwards or downward. Please pay attention to the strap end. Whilst travelling (especially outside the car) it should always be attached to the cover.

Notice!!!

If you need to use a tray, refer to Section 10.4 of this instruction.

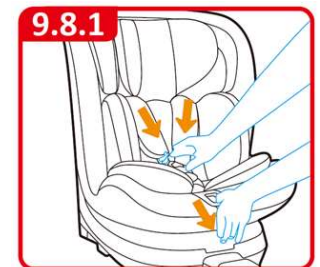
Press the rotating button to adjust the direction of the seat. Only rearward facing position is available for child up to 15 months of age.



9.8 Installation instruction for STATURE 100-150cm, Forward facing (ISOFIX + 3-point vehicle belt)

Remove the baby insert, loosen the shoulder straps by pressing the harness adjusting button and pull the harness shoulder as far forward as possible.

Do not pull on the harness pads.

**Notice!!!**

If you need to use the harness of the restraint device as a stabilizing harness, skip this step.

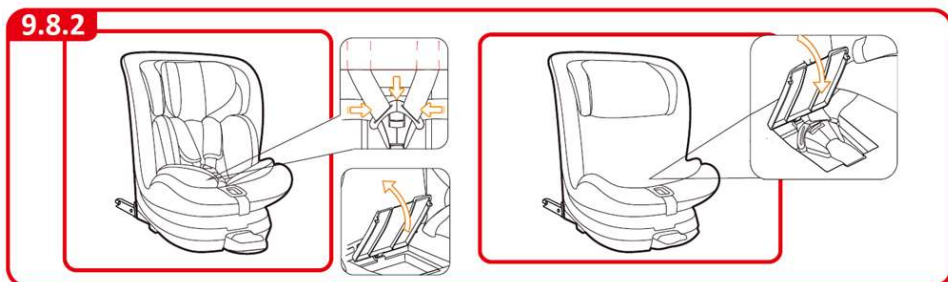


If you need to use the harness of the restraint device as a stabilizing harness adjust the length of the crotch strap - Section 10.6.



For children 100 - 150 cm tall, using only the harness of the restraint device while driving does not provide enough protection in case of an accident. Always use a 3-point car seat belt.

Place the shoulder strap behind the headrest cover, open the cover of buckle storage, assemble the buckle properly, then put it in the storage and close finally.



Fold the support leg assembly according to section 9.5.

Notice!!!

If you need to use a footrest, skip this step and refer to Section 10.5 of this instruction.

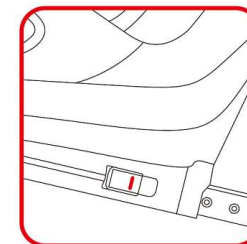
Notice!!!

The seat of the restraint device can only be rotated when the support leg is fully extended.

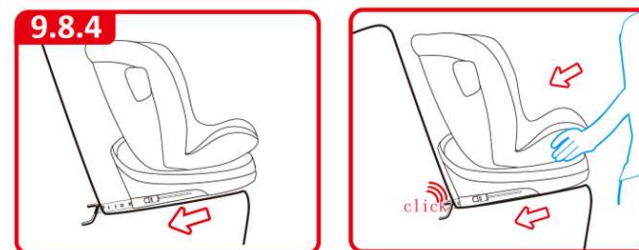


Press the ISOFIX release button to slide the ISOFIX connectors to the end.

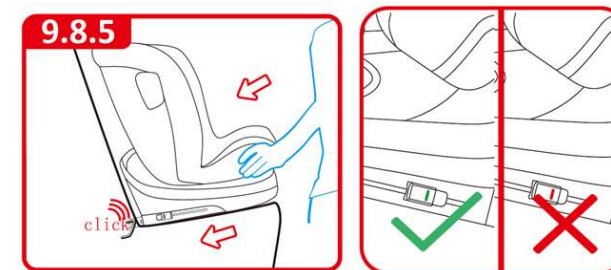
Caution: Please only move to next step when ISOFIX has been slid to the end with appearing the red marks.



Push the ISOFIX connectors directly into the anchorages until you hear an audible sound "click".



Grasp the seat body to check the seat if it is fastened tightly or shakes, meanwhile observe the ISOFIX red/green indicator. If the seat shakes and the ISOFIX connectors are pulled out, please repeat the above steps and install it again.



Notice!!!

If you need to use a lateral supports, refer to Section 10.1 of this instruction.

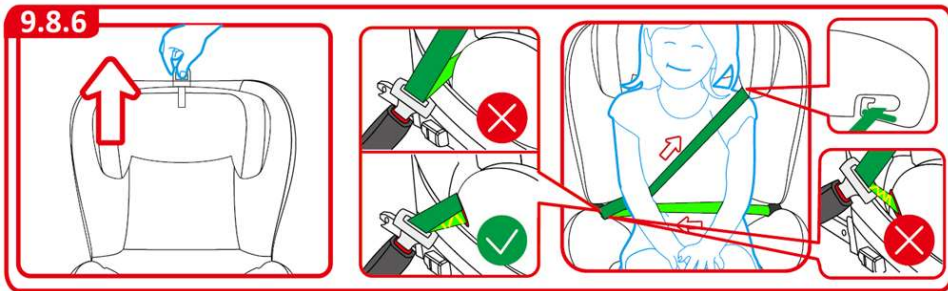
Notice!!!

If you need to use an additional hip pads, refer to Section 10.2 of this instruction.

Notice!!!

If you need to use an abduction wedge, refer to Section 10.3 of this instruction.

Adjust the height of the headrest to suit your child. Put the 3-point vehicle belt through the belt guide. Place your child into the baby car seat and let the car vehicle belt pass the belt guide. Fasten the vehicle belt with an audible sound "click".



Make sure lap strap lap is worn low down, so that the pelvis is firmly engaged. Pull on the strap until it lies flat and is close against your child's body.

The straps should be correctly adjusted and ensure they are not twisted.

Notice!!!

If you need to use a tray, refer to Section 10.4 of this instruction.

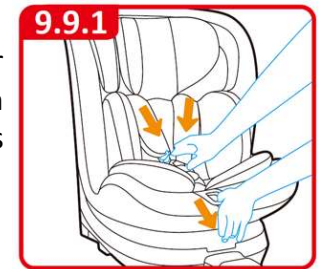


For children 100 - 150cm tall, the device can only be used in the upright forward-facing position. The upright position is set when the arrow points to position 1. See section 9.3.3 of this instruction.

9.9 Installation instruction for STATURE 100-150cm, Forward facing (only 3-point vehicle belt)

Remove the baby insert, loosen the shoulder straps by pressing the harness adjusting button and pull the harness shoulder as far forward as possible.

Do not pull on the harness pads.



Notice!!!

If you need to use the harness of the restraint device as a stabilizing harness, skip this step.

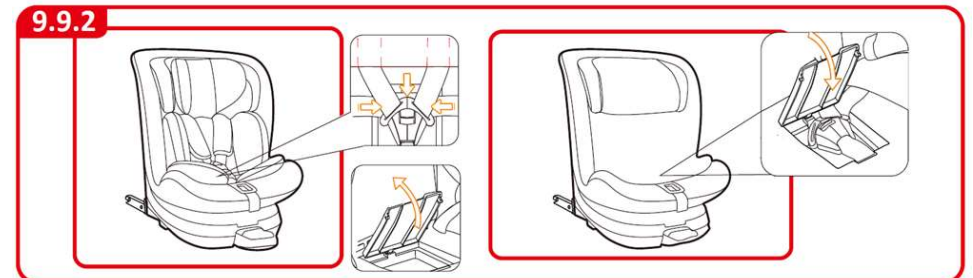


If you need to use the harness of the restraint device as a stabilizing harness adjust the length of the crotch strap - Section 10.6.



For children 100 - 150 cm tall, using only the harness of the restraint device while driving does not provide enough protection in case of an accident. Always use a 3-point car seat belt.

Place the shoulder strap behind the headrest cover, open the cover of buckle storage, assemble the buckle properly, then put it in the storage and close finally.



Fold the support leg assembly according to section 9.5.

Notice!!!

If you need to use a footrest, skip this step and refer to Section 10.5 of this instruction.

Place the restraint device on the vehicle seat.



Notice!!!

If you need to use a lateral supports, refer to Section 10.1 of this instruction.

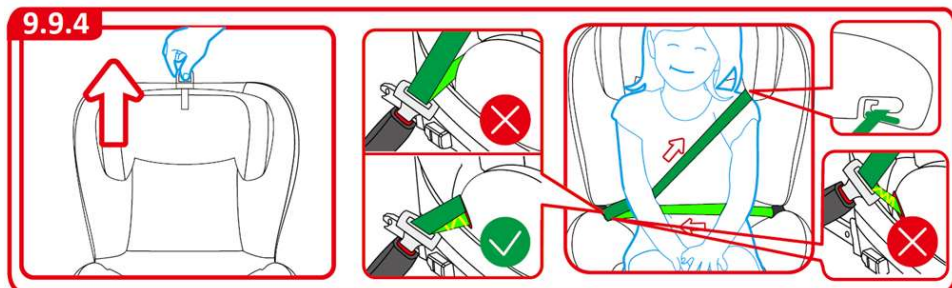
Notice!!!

If you need to use an additional hip pads, refer to Section 10.2 of this instruction.

Notice!!!

If you need to use an abduction wedge, refer to Section 10.3 of this instruction.

Adjust the height of the headrest to suit your child. Put the 3-point vehicle belt through the belt guide. Place your child into the baby car seat and let the car vehicle belt pass the belt guide. Fasten the vehicle belt with an audible sound "click".



Make sure lap strap lap is worn low down, so that the pelvis is firmly engaged. Pull on the strap until it lies flat and is close against your child's body.

The straps should be correctly adjusted and ensure they are not twisted.

Notice!!!

If you need to use a tray, refer to Section 10.4 of this instruction.



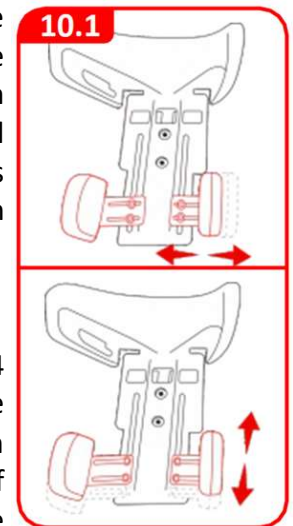
For children 100 - 150cm tall, the device can only be used in the upright forward-facing position. The upright position is set when the arrow points to position 1. See section 9.3.3 of this instruction.

10 Accessories

10.1 Installation and adjustment of the lateral supports

Installation of the lateral supports.

Move the back upholstery away. Place the oval plate with threaded holes in the recess on the inside of the lower part of the headrest (backrest). Apply the lateral supports to the backrest. Using an H4 Allen key, screw in the supplied screws securing the lateral supports to the backrest. Adjust the lateral supports to the desired height and tighten the screws. Put on the upholstery.

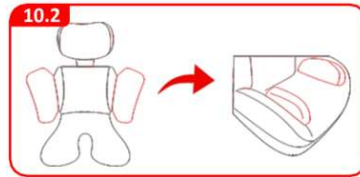


Adjustment lateral supports.

Move the back upholstery away. Then, using an H4 Allen key, loosen the two adjustment screws of the respective lateral support. The position of each lateral support can be adjusted independently of each other both vertically and horizontally. Once you have determined the desired position of the lateral support, tighten the adjustment screws.

10.2 Installation of the additional hip pads

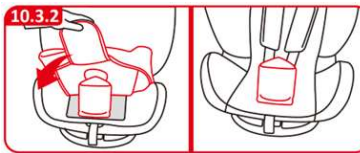
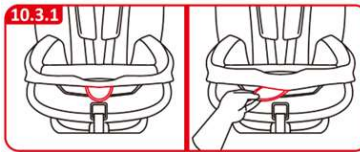
Detach the side cushions from the inner cushion. Pin the detached cushions to the fasteners located in the seat slats on the right and left sides of the seat.



10.3 Abduction wedge

Installation of the abduction wedge.

Lift up the seat upholstery. Fold back the flap covering the seat opening. Thread the abduction wedge through the hole in the seat upholstery. Place the flap covering the hole under the wedge plate. Lower the seat upholstery.

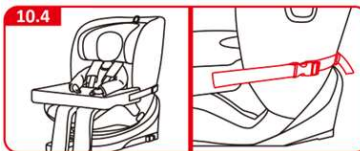


The abduction wedge helps a child with leg adduction tendency to keep his legs in a controlled position.

10.4 Tray

Supporting the tray are the sides of the seat and an abduction wedge, if installed.

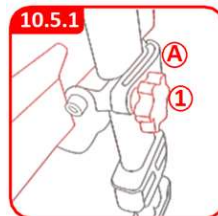
A strap with a buckle is used to secure the table against sliding, which should be passed behind the backrest and adjusted as needed.



10.5 Footrest

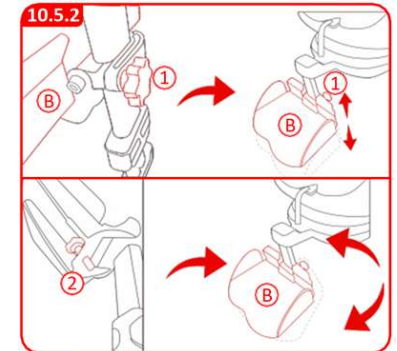
Installation footrest.

Unscrew the knob (1) of the footrest clamp (A). Put the footrest clamp on the support leg. Tighten the clamp (A) with the knob (1).



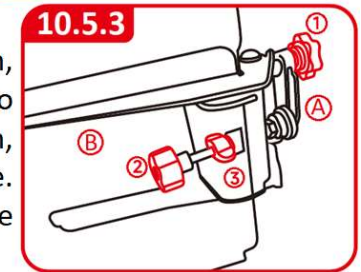
Footrest height adjustment.

To change the height of the footrest (B), loosen the knob (1). After determining the desired height of the footrest, tighten the knob (1). To adjust the angle of the footrest platform (B), use the adjustment knob (2) under the footrest platform.



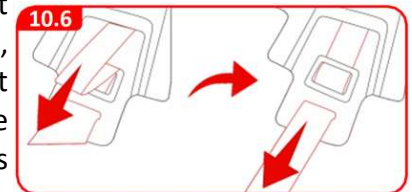
Footrest platform angle adjustment.

To increase the angle of the footrest platform, turn the adjustment knob (2) clockwise, while to decrease the angle of the footrest platform, turn the adjustment knob (2) counterclockwise. To secure the adjustment knob, tighten the locking knob (3).



10.6 Crotch strap length adjustment

To adjust the length of the crotch strap, tilt the seat upholstery upward. In the seat, under the flap, there is a ladder-style belt length adjuster. Adjust the length of the crotch strap according to your child's needs.



11 Cleaning

Use only the original upholstery. The upholstery of the restraint is an integral part of the restraint and performs important functions to ensure the proper functioning of the system. It can be purchased from the manufacturer or dealer of the restraint device.

The upholstery can be machine washed at 30°C using a mild detergent. Please refer to the washing label on the upholstery before washing. It is forbidden to wring or iron the upholstery (the fabric may separate from the foam), a light spinning is allowed. Vacuum mechanically or with a soft bristle brush. The upholstery should be dry before reuse. Plastic parts can be

cleaned with a cloth soaked in water with mild detergent. Do not use aggressive substances (such as chlorine or solvents). The harness can be cleaned with water and mild detergent. Do not remove the buckle buckles from the straps. The moving parts of the restraint do not require periodic maintenance or lubrication.

12 Periodic maintenance activities

The Qai restraint should be regularly inspected and serviced as indicated in the table below to ensure long-term trouble-free operation. If the user is not able to carry out the following operations himself, he should use a specialized restraint service center or contact the manufacturer's service directly.

These activities are not performed under the applicable warranty and are carried out for a fee.

Action	Daily	Weekly	Monthly
Checking the proper operating of the harness buckle	X		
Checking the proper operating of the harness tensioning mechanism	X		
Checking the proper operation of the ISOFIX mechanism	X		
Visual inspection of structural elements (damage, cracks)	X		
Inspection of screw connections (elimination of possible looseness)		X	
Checking the footrest mounting		X	
Checking the operation of the support leg mechanism			X
Checking the proper operation of the tilt adjustment mechanism			X
Checking the proper operation of the seat swivel mechanism			X

13 Spare parts and consumables

The manufacturer does not stipulate that the user must replace components. All repairs and replacement of components should be carried out by persons with technical knowledge, so that the device is not damaged during replacement and does not pose a danger to life or health.

The device is not expected to use consumables in the sense of user-replaceable components.

If you need to replace components, contact your dealer or the customer service department of the restraint manufacturer. Contact information can be found at the end of this instruction.

14 Troubleshooting

Before each use, check the proper operation of the harness, harness buckle, ISOFIX attachments.

If you have difficulty fastening the harness buckle, check if there is a foreign object in the buckle.

If you have difficulty fastening the ISOFIX attachments to the car seat, check whether a car seat belt or other foreign object has been caught in the ISOFIX socket.

If you have difficulty turning the car seat, check that the support leg is fully extended.

If you have difficulty adjusting the angle of the footrest, check whether the lock nut on the adjustment screw has been loosened.



NOTICE!

The restraint can be stored/transported and used at temperatures from -20°C to +40°C and relative humidity from 10% to 90%.

If the device has been stored/transported in a high ambient temperature or has been exposed to direct sunlight, make sure that the surface of the device is at a safe temperature for use, i.e., the caregiver should check that the temperature of the device is not too high before the child has any contact with the device.



15 Security check

For safety reasons, please read this section before traveling. Check that the harness is not loose and that the height of the shoulder strap is appropriate for your child. Regularly check the 5-point harness of the restraint device for damage. If there is any damage or malfunction, do not use the restraint device and contact the dealer or manufacturer. If you have any questions, please contact the dealer or the manufacturer.

16 Warranty

If you notice defects or damage, immediately stop using the restraint device and contact the dealer or manufacturer. The damaged device must be protected from the expansion of the damage area. Do not proceed to repair the device yourself. Do not replace original parts of the device with self-made parts or parts from a source other than the manufacturer's recommendation. The warranty does not cover damage caused by daily use, wear and tear of upholstery elements, or deterioration of material properties due to aging of the product.



If the user abandons further operation of the device, he is obliged to dispose of it in accordance with local environmental regulations.



The manufacturer specifies the life of the product as 10 years. After this period, the device should be replaced with a new one, as the properties of the product may deteriorate, for example, due to aging of plastic components, and this may not be visible.



Post-warranty service of the device is performed by the manufacturer.

- Before use our product, please read the instruction manual carefully, the product is a safety product and is only safe when used in accordance with the instruction manual.
- The product must only be used on a forward facing seats that is fitted with the ISOFIX and support leg anchoring systems.
- The product may be used on either the front or the back seat. However, we recommend that it is fitted on the back seat.
- The product has been approved according to the strictest European safety standards (R129/03) and is for stature 61-105cm/≤18kg, Rearward facing, ISOFIX+Support Leg+Harness and is for stature 76-105cm/≤18kg, Forward facing, ISOFIX+Support Leg+Harness and is for stature 100-150cm, Forward facing, ISOFIX attachment + Vehicle 3 point belt and is for 100-150cm, Forward facing Vehicle 3 point belt.
- After an accident the seat may become unsafe due to damage that is not be noticeable immediately. It should therefore be replaced.
- The safety of the seat can only be guaranteed by the manufacturer if it is issued by the original owner.
- We advise you strongly that not to use a second-hand product, because you are not sure if it is in good condition.
- The harness pads and crotch pad are important for the safety of your child, therefore use them for stature 61-105cm/≤18kg.
- Ensure that all luggage and objects likely to cause injury in the event of an accident are properly secured.
- Do not use this child seat in passenger seats are equipped with airbags.
- It is recommended that the car seats should not be used more than 10 years from the date of production. The properties of the products may deteriorate due to, for example, ageing of the plastic and this may not be visible.
- The baby car seat must not be used without the cover. Please use an original cover, as the cover contributes to the safety of the seat.
- The seat must be secured with a seat belt or ISOFIX and support leg, even when it not on use. An unsecured seat may injure other passengers in the care in an urgent stop.

- The rigid items and plastic parts of a child restraint must be located and installed that they are not liable, during everyday use of vehicle, to become trapped by a movable seat or in door of the vehicle.
- Ensure that the seat is not damaged by heavy luggage, adjustable seats or slamming the car door etc.
- No alterations may be made to the product as this could affect part or the overall safety of the seat.
- In hot weather the plastic and metal parts of the product will be hot. You should cover the seat when the car parked under the sun.
- In order to prevent damage to the cover, do not remove the product's logo.
- Before the purchase, please check that the seat is properly secured in your car.
- Take a short break in long journey. So that your child has some time for the relaxation.
- Set a good example yourself and always wear your seat belts.
- Tell your child that he/she should never play with the harness buckle.
- Any straps holing the restraint to the vehicle should be tight, that any straps restraining the child should be adjusted to the child's body, and that straps should not be twisted.
- Ensuring that any lap strap is worn low down, so the pelvis is firmly engaged.
- This product can not be used any more when it has been subject to violent stresses in an accident.
- Children can not be left in the product unattended.

Questions

Contact your supplier or retailer if you wish to make a warranty claim or have any other questions.

You car seat can be fixed safely on almost seats of the cars. However, some seats the belts are fixed so that proper installation is not possible, in that case, try another seat.

This is an i-Size Enhanced Child Restraint System. It is approved according to UN Regulation No.129, for use in, i-Size compatible vehicle seating positions as indicated by vehicle manufacturers in the vehicle users' manual.

If in doubt, consult either the Enhanced Child Restraint System manufacturer or the retailer.

This is a i-Size booster seat Enhanced Child Restraint System. It is approved according to UN Regulation No. 129, for use primarily in "i-Size seating positions" as indicated by vehicle manufacturers in the vehicle user's manual.

If in doubt, consult either the Enhanced Child Restraint System manufacturer or the retailer.

This "Special Needs Restraint" is designed to give extra support to children who have difficulty sitting correctly in conventional seats. Always consult your doctor to make sure that this restraint system is suitable for your child.

+44 (0) 1626 835 552
info@smirthwaite.co.uk

16 Wentworth Road,
Heathfield, Newton Abbot,
Devon, TQ12 6TL

Edition 1 – 2024

smirthwaite
Together we
transform lives