

VOYAGER

smirthwaite

**designed for support,
built for the journey**





A SEAT FOR CHILDREN REQUIRING EXTRA SUPPORT

Crash tested and conforming to ECE R44-04

Suitable for children from 15-36KGS (CIRCA 3 to 11 years)

Providing security, adaptability and comfort

Straight forward to fit and easy to use



EXTREME HAZARD: DO NOT use on a passenger seats fitted with air bags.

The Voyager is designed to give extra support to children who have difficulty in sitting correctly in conventional seats. Always consult your doctor to make sure that this restraint system is suitable for your child.

Thank You for choosing the Voyager car seat

This seat has been designed with your child's travelling needs in mind.

Please take a few minutes to read through the instructions and familiarise yourself with how the Voyager should be correctly fitted. Seven out of ten children's car seats are incorrectly fitted or unsuitable, this makes them potentially dangerous.

This seat conforms to regulation ECE R44-04, but is only applicable if the vehicle is fitted with 3 point safety belts approved to ECE regulation No 16.

If you have any concerns as how to the seat should be correctly fitted or it's suitability, please contact **01626 835552**.

GUARANTEE

This product is designed to the highest standards, manufactured and tested. However, should this product prove faulty within 12 months of purchase due to a materials or manufacturing fault please return it to the original place of purchase. We will then at our discretion, either repair it free of charge or replace it with the same or a similar product.

For guarantee purposes proof of purchase will be required. We recommend that you retain your receipt and attach it to this user guide. They should then be kept safe in the pocket under the cover.

We do not accept liability for damage arising from abuse, misuse or negligence. This guarantee is not transferable and therefore does not apply to second-hand products.

Your statutory rights are not affected by this guarantee.



CONTENTS

Important Warnings	6
The Voyager Illustrated	8
Fitting Your Child in the Voyager	
Adjusting the harness.	9
Checking the height of the shoulder straps.	11
Removing your child from the Voyager	11
Changing the height of the shoulder straps	12
Adjusting the buckle.	13
Changing the length of the crotch strap	14
Changing the position of the buckle	15
Fitting the Voyager	16
Cleaning your Voyager.	19
Cleaning the cover	20
Cleaning the harness, chest pads and seat	20
Removing and cleaning the buckle	21
Refitting the cover	22
Replacement cover.	22
Rethreading the harness	23
Head Support and Insert Pads	24
Accessories - available from your stockist	25
Final Checklist	26

Important Warnings - Read These First

DO follow these user guide instructions in the order shown and get to know the Voyager before installing it in your vehicle. It may be dangerous not to do so.

DO make sure that the Voyager does not become trapped by a folding passenger seat or in the door of your vehicle.

DO remove heavy clothing, where possible to allow for the harness to be correctly adjusted.

DO cover the Voyager if your vehicle is left standing in direct sunshine. Metal and plastic fittings can become hot to touch in sunny weather and the cover fabric may also become faded.

DO take care if you do not have rear seat-belts in your vehicle. Put the lightest passenger behind the Voyager because in an accident they will cause less damage than a heavier person.

DO store the Voyager in a safe place when it is not being used. Avoid placing heavy objects on top of it.

DO NOT use the Voyager on passenger seats fitted with airbags.

DO NOT use with a lap belt.

DO NOT use the Voyager on side facing vehicle seats.

DO NOT use the Voyager in the home. It has not been designed for home use and should only be used in your vehicle.

DO NOT use anything, such as a cushion or coat, to raise the Voyager off the passenger seat. In an accident the Voyager and vehicle seatbelts would not be able to protect your child as well as they should.

DO NOT attempt to dismantle or modify any part of the Voyager or change the way its harness or your vehicle seat-belts are made or used .

DO NOT leave loose objects, such as luggage or books, in the back of your vehicle. They must be secured. If you have to stop your vehicle suddenly loose objects will keep moving. They can then cause serious injuries. Large and heavy loose objects are a particular risk. You **MUST** always keep the Voyager secure even if it is not being used by your child.

DO NOT leave folding passenger seats unlatched. If you have to stop your vehicle suddenly a loose seat back could prevent the Voyager from protecting your child as well as it should.

DO NOT leave children alone in your vehicle, even for a short time.

DO NOT allow children to play with the Voyager.

No child seat is escape proof After an Accident

In the event of an emergency the Voyager buckle and harness have been designed to meet the recognised standard for quick release. Children should be persuaded not to play with the buckle or tamper with the harness.

After an accident, the Voyager and vehicle seat-belts should be replaced. Although they may look undamaged if you were to have another accident the Voyager and vehicle seat-belts may not be able to protect your child as well as they should.



The Voyager Illustrated

These are the different parts of the Voyager.

- 1 Seat-belt routing slot
- 2 Side slots
- 3 Buckle (with comfort pad behind)
- 4 Harness adjuster tab (under cover flap)
- 5 Harness adjuster strap
- 6 Cover
- 7 Seat Shell
- 8 Adjuster strap loop
- 9 Elastic ties
- 10 Shoulder strap slots
- 11 Harness
- 12 Chest pads
- 13 Chest clip
- 14 2 Position crotch strap
- 15 Fitting kit slots
- 16 Shoulder straps
- 17 User guide pocket (under cover)
- 18 Head support (removable)
- 19 Insert pads (under cover)



Fitting your child in the Voyager

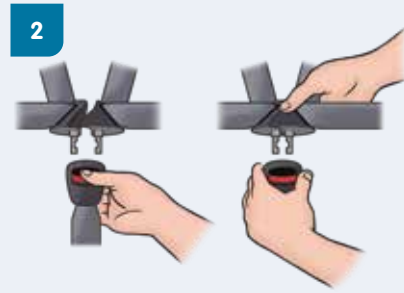
Stand the Voyager on the floor supporting the back. Follow the instructions below on how to fit the harness around your child.

Then check the height of the shoulder straps and adjust them if necessary. Finally, remove your child before installing the Voyager in a vehicle.

Adjusting the harness



1. With one hand, press and hold down the harness adjuster tab. Then, with the other hand below the chest pads, pull the shoulder straps forwards.



2. Unfasten the chest clip first. Then unfasten the buckle by pressing the red button (a) and place your child in the seat. Fit the harness around your child. To fasten the buckle (b); first fit the two upper sections together as shown, then push them firmly into the lower section until you hear a positive click.

NOTE: With larger children the buckle may need adjusting before the harness will fasten properly - see Adjusting the buckle on page 13.

3



3. Make sure the harness is not twisted and gently pull it up to tighten the lap sections. Make sure the lap straps are kept low down on your child's body by, if necessary, shortening the length of the crotch strap - see [Changing the length of the crotch strap](#) on page 14.

4



4. Pull the adjuster strap forward making sure the harness is a comfortable but **FIRM** fit around your child. The adjuster strap may then be stored under the cover flap.

5



5. Finally, pull both chest pads down from your child's shoulders onto the chest and fasten the chest clip. Now check the height of the shoulder straps as shown below.

IMPORTANT

The chest pads are a safety feature. **NEVER** use the Voyager without them.

Checking the height of the shoulder straps

6



Shoulder straps too low



Shoulder straps too high



Shoulder straps at correct height

Undo the harness and go to **Changing the Height of the Shoulder Straps** on page 12.

Undo the harness and go to **Fitting options for the Voyager** on page 16.

6. The shoulder straps **MUST** be threaded through the slots in the cover and seat shell nearest the top of your child's shoulders. If in any doubt always use the slot above the shoulder rather than below it.

Once you reach the top slots your child may continue to use the seat until their eye line becomes level with the top of the seat shell or their weight exceeds 36kg.

Removing your child from the Voyager

7



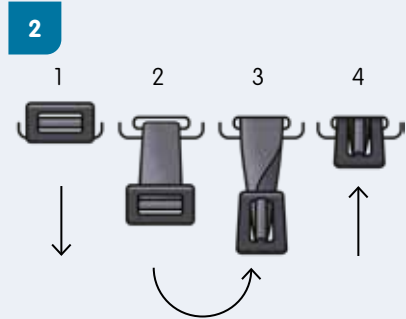
7. Unfasten the chest clip and loosen the harness. Then unfasten the buckle by pressing the red button.

To help prevent the harness from twisting, before you remove your child from the seat, fully slacken the harness and lay the shoulder straps on the outside of the seat as shown.

Changing the height of the shoulder straps



1. Turn the Voyager on its side. On the end of each harness strap is a metal tab, found under the seat and held in place by the cover elastic. Undo the elastic ties.



2. Take hold of one metal tab and turn it so that the short side will go through the slot. Push the tab through to the front of the Voyager.



3. Fold the chest pad so that the chest clip is in line with the shoulder strap as shown above. Then push the chest pad and strap to the back of the seat through the shoulder strap slot in the cover and the seat shell.



4. Re-thread the strap and chest pad through the correct shoulder strap slot in the seat shell and the cover.

Make sure it is not twisted. From the front of the Voyager, hold a metal tab in each hand, pull the harness straps fully forward making them the same length.

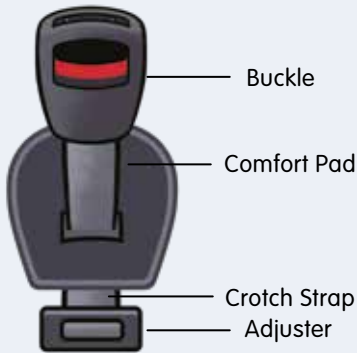
5



Buckle Tongues

5. Re-thread the strap through the side slot of the cover and seat shell so that the metal tab is now in its original place under the seat. Re-secure it using the cover elastic. Pull the harness strap forward to remove any slack. Make sure the harness strap is not twisted and is threaded through the buckle tongues as shown. Repeat from step 1 above with the other strap.

Adjusting the buckle (for the larger child)



With larger children the buckle may need adjusting. This can be done by changing either

a: the length of the crotch strap attached to it (see overleaf) or b: the position of the buckle (see page 15)



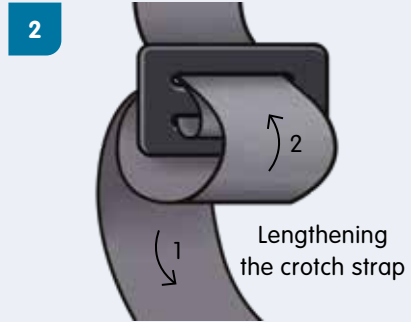
IMPORTANT

- a The crotch strap should only be repositioned or extended when the shoulder straps are at their full length.
- b Always return the crotch strap to its original position and shorter length when using the seat with a smaller child.
- c Always position the buckle low down on your child's body.
- d DO NOT attempt to remove the crotch strap from the adjuster. Adjustment is made by feeding the crotch strap through.**

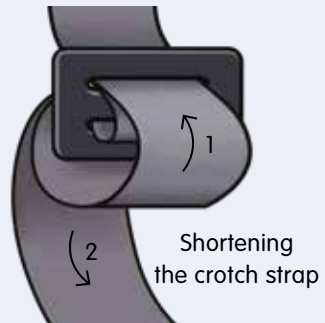
Changing the length of the crotch strap



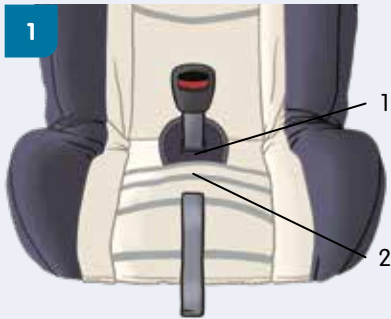
1. Turn the Voyager on its side. The adjuster at the end of the crotch strap is found under the front of the seat.



2. To change the length of the crotch strap thread it through the adjuster in the direction of the arrows shown above.



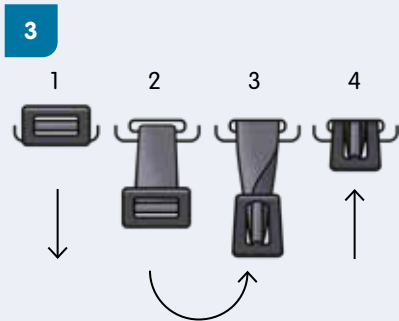
Changing the position of the buckle



1. The buckle has two positions and may be adjusted to best suit your child



2. If you do need to change the position of the buckle first turn the Voyager on its side. The adjuster tab at the end of the crotch strap is found under the front of the seat.



3. Take hold of the adjuster and turn it so that the short side will go through the slot. Push it through to the front of the Voyager.



4. Re-thread the crotch strap and adjuster through the correct slot in the seat shell and cover. Make sure the red buckle button faces you.

Fitting the Voyager

1



1. Where possible, remove the vehicle seat head-rest.

Then place the Voyager on the vehicle seat. Fasten the buckle and pull the harness taught.

2



2. Pull the seatbelt fully out and hold the lap and the diagonal sections together. Keep them together as you pass the seat belt through the first seat-belt routing slot, indicated in red on the Voyager.

3



3. ... and then pass the seat -belt back through the second seat-belt routing slot to the front of your child seat.

4



4. Fasten the seat-belt, making sure it is not twisted. Before moving on to step 5 please read the 'Anchorage Points' information below.



ANCHORAGE POINTS

The points at which your vehicle seat-belt is attached are known as anchorage points.

Depending on the position of the upper anchorage point, the seat-belt should be routed as shown above.



5. Carefully kneel on the Voyager and push it into the vehicle seat using your full body weight. Pull the seatbelt here to tighten the lap section...



6. ...and then pull here to tighten the diagonal section of the seat-belt.

NOTE: If using a static seat-belt make sure all the slack is removed through the seat-belt adjuster.

7



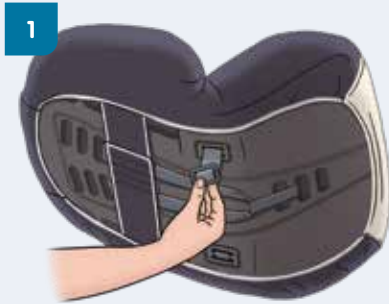
7. The Voyager should now be secure. To check this, try to pull the seat forward by the harness. It should feel firm, not loose.

Check that the Voyager is secure before each journey.

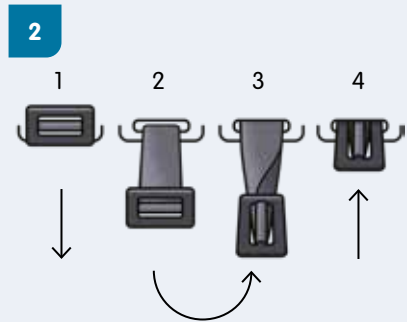
Removing the Voyager

To remove your Voyager from your vehicle simply unfasten the seat-belt and unthread it from the Voyager.

Cleaning your Voyager



1. If you are using the head support, remove it first. Turn the Voyager on its side. On the end of each harness strap is a metal tab, found under the seat and held in place by the cover elastic. Undo the elastic ties.



2. Take hold of one metal tab and turn it so that the short side will go through the slot. Push the tab through to the front of the Voyager.



3. Fold the chest pad so that the chest clip is in line with the shoulder strap as shown above. Then push the chest pad and strap to the back of the seat through the shoulder strap slot in the cover and the seat shell.

Repeat from step 1 for the other harness strap.



4. Unfasten the Velcro™ strip at the back of the Voyager.

5



5. Remove the comfort pad from the crotch strap. Gently pull the cover up, easing the buckle and adjuster strap through their slots in the cover.

IMPORTANT

The cover is a safety feature.
NEVER use the Voyager.

Cleaning the Cover

Please read the label on the cover for washing instructions. The cover is machine-washable.

Remove foam rolls, head support foam and insert pads before washing.

DO NOT tumble dry the cover - drip dry only.

Cleaning the harness, chest pads and seat

SPONGE CLEAN ONLY using bathroom soap and warm water.

DO NOT machine wash the harness, insert pads or foam rolls.

DO NOT attempt to remove the harness adjuster strap from the seat. It is unnecessary and dangerous to do so.

DO NOT use solvents, detergents or washing-up liquid as these may weaken the harness and the seat.

1



1. Remove the buckle and crotch strap as shown on page 8, steps 2-4. Then thoroughly rinse the buckle with warm water.

2



2. Fasten and unfasten the buckle several times until a positive click is heard. If, after fastening the buckle several times, you still cannot hear a positive click run the buckle under warm water again. When the buckle does fasten with a positive click leave it to dry.

DO NOT oil any part of the buckle.



If the buckle still does not return to its original working order, contact our Customer Services Helpline on

01626 835552.

3



3. Re-thread the crotch strap and adjuster through the correct slot in the seat shell and the cover. Make sure the red buckle button faces you.

Refitting the cover

To refit the cover, place it on the seat and pull the buckle and adjuster strap through the correct slots in the cover.

Put the comfort pad on over the buckle. Pull the harness straps and chest pads through the slots in the seat shell and cover corresponding to their shoulder height positions.

Feed the harness tabs through the side slots making sure the straps are not twisted. Push the elastic ties under the cover through the side slots. Do up the elastic ties to secure the tabs and refasten the Velcro strips at the back.

Replacement cover

The Voyager, its cover, comfort pad, head support and chest pads have been carefully designed, manufactured and tested to high safety standards.

Don't put your child's safety at risk by using other makes of replacement cover, comfort pad, head support or chest pads. They could stop the Voyager protecting your child as well as it should.

Replacement covers, including chest pads and comfort pad, are available from your stockist.

Rethreading the harness

We do not recommend unthreading the harness from the harness adjuster loop. However, if the harness does become unthreaded, follow the instructions below.

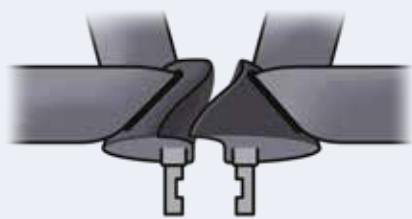


1. Make sure the harness is properly threaded through the harness adjuster loop as shown above.

DO NOT thread the chest pads strap through the harness adjuster loop



2. Make sure the buckle tongues are the right way round when re-threading the harness straps and chest pads through the shoulder slots. When facing the back of the Voyager, the largest buckle tongue is always to the right.



Buckle Tongues

3. Re-thread the straps through the side slots of the cover and seat shell so that the metal tabs are now back in their original position under the seat. Re-secure them using the cover elastic. Pull the harness straps forward to remove any slack.

Make sure the harness straps are not twisted and are threaded through the buckle tongues as shown.

Head Support and Insert Pads



Head Support

If the head support is being used, always make sure that its straps are routed through the top shoulder slots and over the top of the Voyager.



Move the head support up or down to suit the height of your child. Replacement head supports are available from your stockist.

Insert Pads

The insert pads are designed to be "mixed and matched" to offer your child more support if required.

The large pads fit down the sides of the Voyager under the cover, while the foam rolls are held in place by elastic loops.

Additional insert pads and foam rolls, if required. Please call

01626 835552.



Accessories - available from your Voyager stockist



Seat Extension

Attaches to the seat making it deeper and more comfortable for a larger child.

1. Remove the buckle and crotch strap as shown on page 8, steps 2-4. Then thoroughly rinse the buckle with warm water.

Replacement Harness

Frayed or worn harnesses should be replaced. Please call **01626 835552**.



Recline/Stability Bar

Can be used to give an alternative seating angle or greater stability in certain cars.

A = Without recline/stability bar

B = With recline/stability

Replacement Cover

The Voyager, its cover, comfort pad, chest pads and insert pads have all been carefully designed and manufactured to high safety standards.

Don't put your child's safety at risk by using other makes of replacement cover, comfort pad, chest pads or insert pads. They could stop the Voyager protecting your child as well as it should.

Replacement covers, including chest pads and comfort pad, are available please call **01626 835552**.

Final Checklist

However safe a child seat is, however well built it is, your child's safety depends on you. Read through this final checklist every time you use the Voyager in your vehicle.

1. Have you correctly adjusted the harness to suit your child and the clothing he or she is wearing?

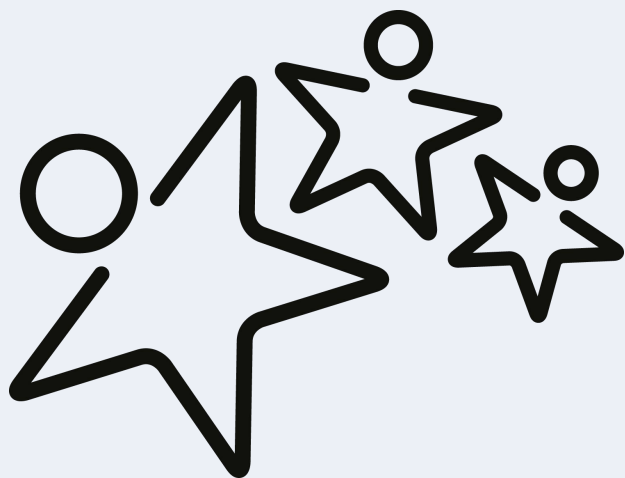
[See Page 9, Adjusting the Harness](#)

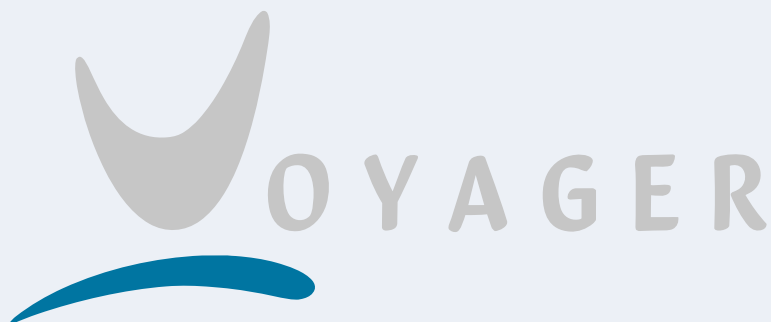
2. Do you hear a click when fastening the buckle? If you cannot hear a positive click **DO NOT** use your child seat. The buckle may need cleaning.

[See page 20, Removing and Cleaning the buckle](#)

3. Have you installed the Voyager properly?

[See page 16, Fitting the Voyager \(Option A\)](#)





smirthwaite

Together we
transform lives



Distributed by:

Smirthwaite

Email: info@smirthwaite.co.uk

Tel: 01626 835552